

DENTAL PROGRAMME 2019 · 2020



WELCOME TO THE DENTALISTS!

Dear customers and business partners,

As a researching dental enterprise our focus is first and foremost on you and your expectations in respect of our products. No matter if they are put to use in the dental surgery or in the laboratory – what counts are ease of working, reliability, individuality and, of course, top quality.

All of these are characteristics of our brand products – those in the segment of products for daily clinical use, as well as those for the digital workflow. VOCO offers quality for all areas of your practice, from maximal biocompatibility in a restorative material and problem-solving root posts to progressive composite blocks for CAD / CAM use and cutting-edge 3D printers.

Read on to find out more about our diverse portfolio for preventive, restorative, prosthetic and digital dentistry. Acquaint yourself with our products in the following areas

- **Oral Care**
- **Direct restoration**
- **Indirect restoration** and
- **Devices - Various**

and discover VOCO's top quality standards.

If you have any questions or require further information, please feel free to contact your VOCO dental consultant. Of course, our Customer Service department will also be pleased to help (contact them by e-mail to service@voco.de or by Freecall on 00 800 44 444 555).

Product information, instructions for use, scientific information, clinical case reports and lots more are also available at www.voco.dental.

Your VOCO GmbH

ORAL CARE

Professional cleaning

CleanJoy	7
----------	---

Fissure sealing

Grandio Seal	8
Fissurit FX	9
Fissurit F	9

Prophylaxis

Bifluorid 10	10
Bifluorid 5	10
Remin Pro	11

Desensitiser

VOCO Profluorid Varnish	12
Admira Protect	13

Whitening

Perfect Bleach	14
Perfect Bleach Office+	15

Prophylaxis Set

Prophylaxis Set	16
-----------------	----

DIRECT RESTORATION

Liner

Calcimol LC	18
Calcicur	18
Ionoseal	19

Bonding

Futurabond U	20
Futurabond M+	21
Futurabond M	21
Futurabond DC	22
Vococid	22
Futurabond NR	23
Solobond M	23

Restoratives (ORMOCER®s)

Admira Fusion	25
Admira Fusion Flow	26
Admira Fusion x-tra	27
Admira Fusion x-base	28
Admira Bond	28

Restoratives (Composites)

GrandioSO	29
GrandioSO Flow	30
GrandioSO Heavy Flow	31
GrandioSO x-tra	32
GrandTEC	32
Grandio	33
Grandio Flow	34
Amaris	35
Amaris Flow	35
Amaris Gingiva	36

FinalTouch	36
VisCalor bulk NEW	37
x-tra base	38
x-tra fil	39
Arabesk	40
Arabesk Flow	40
Alfacomp LC	40
Polofil Supra	41

Restoratives (Compomers)

Twinky Star	41
Twinky Star Flow	41

Restoratives (Glass ionomer materials)

Ionolux	43
IonoStar Plus	44
IonoStar Molar	44
VOCO Ionofil Molar AC Quick	45
VOCO Ionofil Molar	45
Easy Glaze	46

INDIRECT RESTORATION

CAD / CAM material

Grandio blocs · Grandio disc	48
V-Print splint	49
V-Print SG	49
V-Print model	49

Luting

Bifix SE	51
Bifix QM	52
Ceramic Bond	52
Meron Plus	53
Meron Plus QM	53
Meron (Application capsule)	54
Meron	54
Aqua Meron	54
Quick Up	55
BrackFix	56

Core build-up

Rebilda Post	57
Rebilda Post GT	58
Rebilda DC	59
Grandio Core Dual Cure	60

Temporaries

Structur 3	61
Structur 2	62
Temporary Set	62
Structur Premium	63
Bifix Temp	63
Provicol QM Plus	64
Provicol	64
Provicol QM	64
Clip Flow	65
Clip	65
Clip F	65

Denture relining

Ufi Gel hard C	66
Ufi Gel hard	66
Ufi Gel SC	67
Ufi Gel P	67

Impression

V-Posil Putty Fast NEW	68
V-Posil Heavy Soft Fast	68
V-Posil Mono Fast	68
V-Posil Light Fast	69
V-Posil X-Light Fast	69
Registrado X-tra	70
Registrado Clear	70
Individuo Lux	71
Profibase	71
Fit Test C & B	72

Repair

Cimara	72
--------	----

DEVICES · VARIOUS

3D printer

SolFlex 350	74
SolFlex 650	74
SolFlex 170	75
OtoFlash	75

Devices

VisCalor Dispenser NEW	76
Caps Warmer	77
VOCO Dynamic Dispenser	77
Celalux 3	78
GIC Mixer	78

Others

Caries Marker	79
Pele Tim	79
Block Out Gel LC	80
Dimanto	80

Cleaning

Traypurol tabs	81
Traypurol	81

Small devices

Caps Dispenser	82
Dispenser	82
QuickMix Dispenser	82
AC Applicator	82
AC Activator	82
Application brush dispenser	82

Disposable articles

Disposable articles	83
---------------------	----

ICONS

The following icons enable you to quickly find the right product and make a first assessment and judgement within seconds, which allows you to quickly gain a general overview.

- 

Material composition
Both the fillers and the resin matrix of this product are based purely on silicon oxide.



Working directions
This material is suitable for so-called bulk fillings with a maximum layer thickness of 4 mm. For detailed information, please consult the instructions for use.
- 

Material composition
This product is based on nano-hybrid technology.



Fluoride content
This product contains the level of fluorides indicated. For detailed information, please consult the instructions for use.
- 

Curing of the material
This product either cures through exposure to light or it self-cures chemically. For detailed information, please consult the instructions for use.



Material compatibility
This product can be used with the materials indicated. For detailed information, please consult the instructions for use.
- 

Curing of the material
This product self-cures chemically. For detailed information, please consult the instructions for use.



Application of the material
This material is available in the non-running, non-dripping NDT®-syringe.
- 

Curing of the material
This product cures through exposure to light. The time indicated represents the average time. For detailed information, please consult the instructions for use.



CAD / CAM
This product is suitable for use in digital dentistry. For detailed information, please consult the instructions for use.
- 

Method of application
Preparatory conditioning of the tooth surface is not required before application of this material to the tooth. For detailed information, please consult the instructions for use.



Indication of retention time in the mouth
This product is retained in the mouth for the minimum duration shown.
- 

Method of application
Separate etching of the tooth surface is necessary before the adhesive system (bond) is used. For detailed information, please consult the instructions for use.



Indication of working time
The maximum extraoral working time for this product is as shown.
- 

Method of application
No separate etching of the tooth surface is required before the adhesive system (bond) is used. For detailed information, please consult the instructions for use.



Indications for process monitoring
This device either already possesses, or can be upgraded with, sensors for printing process assurance.
- 

Indications
According to indications, this product is suitable for fillings of the classes of cavity listed. For detailed information, please consult the instructions for use.



Information on material vat
This product uses the patented flexible vat technology for reduced peeling forces and a decreased requirement for support structures.
- 

Volume shrinkage
During setting, this product is subject to the volume shrinkage indicated in percent.



Indication of wavelength
This material can be light-cured using a UV-LED light source with the wavelength shown.
- 

Filler content
This product has a defined filler content, which is indicated in percent by weight.



Format of communication data
This product processes the data format indicated.
- 

Hardness of the material
This product possesses the shore A hardness shown.



Non-sedimenting
This product is non-sedimenting. The product enables additive manufacturing of objects from homogeneous solution throughout the entire printing process.
- 

Radiopacity
After completion of the working process, this material is highly radiopaque. The value shown indicates the radiopacity in percent relating to the aluminium equivalent.



Application of the material
When heated, the viscosity of this material changes, thus uniting the respective advantages of flowable and sculptable materials. Specifically designed to be heated for use.

Oral Care

Protection. Care. Conservation.

Healthy teeth are a valuable asset, and to keep them healthy for a long time you and your patients work together with us towards a common goal. For this to succeed, VOCO products make an important contribution. With fluoride varnishes suitable for a great variety of indications. With fissure sealants offering high filler content even in conjunction with transparency. With immediately effective desensitisers. With cleaning pastes in various grades. No matter which product you choose, you will always make the right decision. For whitening, we further offer a complete series, which is as convincing in its use as it is in its result – both at the dental office and at home.



Oral Care

DEVICES · VARIOUS

INDIRECT RESTORATION

DIRECT RESTORATION

ORAL CARE

Cleaning						
Page		RDA values	flavour	presentation	special characteristics	
7	Cleanjoy	700 ppm	coarse (195), medium (127), fine (16)	mint	SingleDose, tube	xyliol, "traffic light coding"

Fissure sealing					
Page		% w/w	opaque		
8	Grandio Seal	70 % w/w	•		
9	Fissurit FX	55 % w/w	•		
9	Fissurit F	n/s	•		

Fluoridation · Desensitisation						
Page		fluoridation	desensitisation	fluoride content	presentation	flavour
10	Bifluorid 10	•	•	22,600 ppm	SingleDose, bottle	clinical
10	Bifluorid 5	•	•	11,300 ppm	SingleDose, bottle	clinical
11	Remin Pro	•	•	1,450 ppm	tube	mint, melon, strawberry
12	VOCO Profluorid Varnish	•	•	22,600 ppm	SingleDose, tube, cartridge	mint, melon, caramel, cherry, bubble gum
13	Admira Protect		•	•	SingleDose, bottle	clinical

Whitening					
Page		carbamide peroxide	hydrogen peroxide	home	office
14	Perfect Bleach	10 % / 16 %	equiv. to 3.5 % / 6%	•	•
15	Perfect Bleach Office+		35 %		•

CleanJoy®

Fluoride-containing tooth cleaning and polishing paste in three cleaning grades

Indications

Removal of soft and hard surface plaque

Removal of extrinsic discolouration (e.g. staining from coffee, tea or tobacco)

Polishing of tooth surfaces as part of professional tooth cleaning, prior to whitening or following the removal of orthodontic devices

Cleaning and polishing of restorations as part of professional tooth cleaning

Removal of residues of temporary luting material prior to definitive bonding (cementation)

Advantages

- Stable, homogenous consistency
- No splashing (2,000 - 3,000 r / min)
- No parabens
- Available in three abrasion grades, thus can be individually adjusted to each situation
- RDA values (measured in accordance with DIN EN ISO 11609)
 - coarse (red) RDA = 195
 - medium (yellow) RDA = 127
 - fine (green) RDA = 16
- Traffic light coding: simple to use without confusion
- The green polishing paste has a very low grade of abrasion and is therefore also suitable for the care of implants
- Can be used with any conventional instrument (small brush, cup etc.)
- Contains fluoride (700 ppm) and xylitol (inhibiting effect on the metabolism of bacteria)
- Pleasant light mint flavour

Advantages of the *SingleDose*

- Easy, quick and hygienic
- No additional devices required
- No spilling in any position

Application



REF 2092	Tube 100 g coarse (red)
REF 2091	Tube 100 g medium (yellow)
REF 2090	Tube 100 g fine (green)
REF 2089	Tube 4 × 100 g fine (green)
REF 2098	<i>SingleDose</i> 200 × 2 g coarse (red)
REF 2097	<i>SingleDose</i> 200 × 2 g medium (yellow)
REF 2096	<i>SingleDose</i> 200 × 2 g fine (green)

Not available in Canada

Grandio® Seal

Light-curing nano-hybrid fissure sealant



Indications

- Sealing / filling of pits and fissures
- Sealing / facing of damaged enamel surfaces
- Covering of caries predilection sites during orthodontic treatments
- Sealing of deciduous teeth

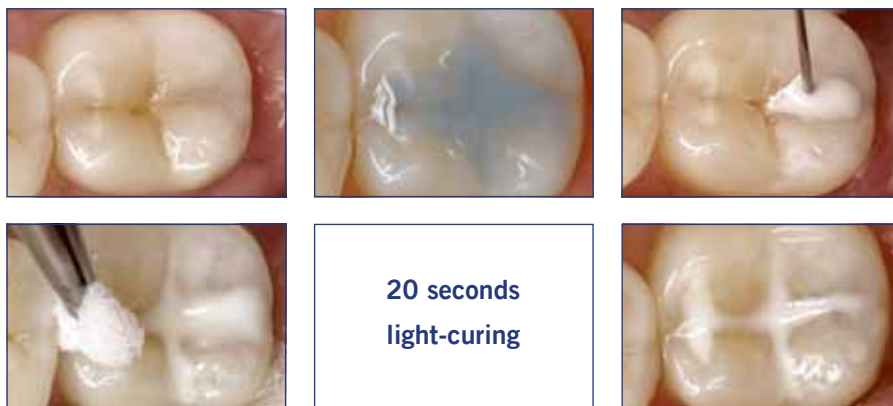
Advantages

- Use of nano-fillers for optimal flow behaviour
- With 70 % w/w highest filler content in its class
- Outstanding physical properties
 - low abrasion
 - high transverse strength
 - extremely low shrinkage values
- Excellent handling
- Optimal wetting
- Perfect marginal adaptation
- Ideal for sealing composite or glass ionomer fillings (protective layer against humidity)

Grandio® Seal in the NDT®-syringe

- NDT® means non-dripping-technology
- Especially suited for fine-flowing materials
- Can be dosed and applied with precision
- Without any loss of material

Clinical Case



REF 1060	Set syringe 5 × 2 g, Vococid gel syringe 5 ml, accessories
REF 1061	Syringe 2 × 2 g, accessories
REF 2147	Application cannulae type 45, 100 pcs.

Source: Dr. Marcelo Balsamo, São Paulo / Brazil

Fissurit® FX

Highly filled light-curing fissure sealant with fluoride, white

Indications

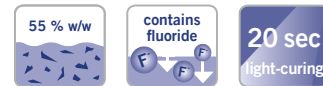
Sealing of fissures and occlusal surfaces for caries prophylaxis

Sealing of extended fissures

Filling of small cavities

Advantages

- Filler content of 55 % w/w for outstanding abrasion proofness
- Quick and easy application from the direct-application syringe with bendable metal cannulae
- Optimal flow properties
- High stability and good adhesion to enamel
- Perfect marginal adaptation
- Continuous fluoride release
- White for easy visual control



REF 1181 Syringe 2 × 2.5 g, accessories
REF 2145 Application cannulae type 40, 100 pcs.

Not available in Canada

Fissurit® F

Light-curing fissure sealant with fluoride, white

Indications

Sealing of pits, fissures and occlusal surfaces for caries prophylaxis

Facing of damaged enamel surfaces

Anchoring of orthodontic appliances

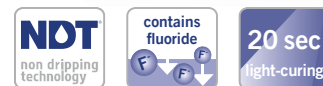
Sealing of composite and cement fillings (protection against moisture)

Restoration of small carious lesions

Repair of small defects in composite and amalgam fillings

Advantages

- Quick and direct application from the non-dripping NDT®-syringe
- White for application control
- Excellent flow properties and low viscosity
- High stability and good adhesion to enamel
- Perfect marginal adaptation
- Continuous fluoride release



REF 1180 Bottle 2 × 3 ml
REF 1292 Syringe 2 × 2 g, accessories
REF 1293 Set syringe 5 × 2 g, Vococid gel syringe 5 ml, Vococid bottle 2 × 3 ml, accessories
REF 2145 Application cannulae type 40, 100 pcs.

Professional cleaning

Fissure sealing

Prophylaxis

Desensitizer

Whitening

Prophylaxis Set

Bifluorid 10®

Fluoride varnish for the treatment of dental hypersensitivity



Indications

Treatment of hypersensitivity, including

- cervical area and crown margins
- sensitivity after professional cleaning and calculus removal
- tooth surfaces after preparation and / or grinding
- worn occlusal surfaces and teeth carrying clasps
- after injury of the enamel (e.g. fractures, chips)
- sealing cavity margins after restoration, especially after the etching technique has been employed
- as a dentine protection / lining under amalgam fillings

Advantages

- Immediately desensitising
- Formation of a protective coat against thermal and mechanical influences
- Transparent – no discolouration of teeth
- Special varnish base reinforces long-term effect and deep fluoridation
- Economical and simple – high yield, low cost, fast application
- Dries quickly
- Colophony-free
- Contains 5 % sodium fluoride (equal to 22,600 ppm fluoride) and 5 % calcium fluoride

REF 1615	Bottle 4 g, Solvent bottle 10 ml
REF 1616	Bottle 10 g
REF 1617	Bottle 3 × 10 g, Solvent bottle 10 ml, Pele Tim No. 1
REF 1618	<i>SingleDose</i> 50 pcs., accessories
REF 1619	<i>SingleDose</i> 200 pcs., accessories
REF 1032	Solvent bottle 10 ml
REF 2338	Brush holder for VOCO disposable dental brushes and Micro Tim, 5 pcs.
REF 2249	Micro Tim, fine application brushes, 100 pcs.
REF 2252	Pele Tim, No. 1, 3.000 × ø 4 mm

Not available in Canada

Bifluorid 5

Fluoride varnish for the treatment of dental hypersensitivity



Indications

For the treatment of hypersensitive necks of teeth and crown edges

For fluoridation of dental enamel and desensitisation after grinding single or several teeth

Advantages

- Unique fluoride desensitizer with sodium and calcium fluoride
- Immediate and long-lasting desensitisation
- Biocompatible – no methacrylates or glutaraldehydes
- Transparent – no discoloration of teeth

REF 1333	Bottle 10 g
REF 1335	Bottle 4 g, Solvent bottle 10 ml
REF 1336	Bottle 3 × 10 g, Solvent bottle 10 ml, Pele Tim No. 1
REF 1330	<i>SingleDose</i> 50 pcs., accessories
REF 1331	<i>SingleDose</i> 200 pcs., accessories
REF 1032	Solvent bottle 10 ml

Remin Pro®

Protective dental care with fluoride and hydroxy apatite



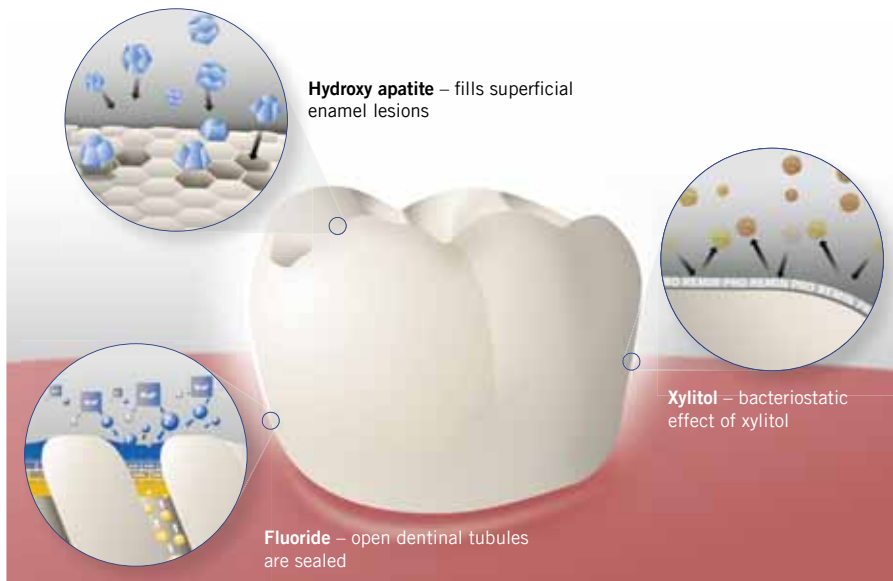
Indications

- After tooth whitening
- After professional tooth cleaning
- For the prevention and control of hypersensitivities
- During orthodontic treatment

Advantages

- Contains fluoride (1,450 ppm), hydroxy apatite and xylitol
- Provides a balanced oral flora and thus protects the teeth against harmful acid attacks
- Strengthens the teeth after whitening and professional cleaning
- Cariostatic properties from the contained xylitol
- Available in three aromatic flavours (melon, mint and strawberry)
- Can be used daily and especially well-suited for use at home

How it works



REF 2003	Tube 12 × 40 g melon
REF 2004	Tube 12 × 40 g mint
REF 2005	Tube 12 × 40 g strawberry
REF 2006	Tube 12 × 40 g mixed
REF 2007	Tube 3 × 40 g mixed

Not available in Canada

Professional cleaning

Fissure sealing

Prophylaxis

Desensitiser

Whitening

Prophylaxis Set

VOCO Profluorid® Varnish

Fluoride-containing dental desensitising varnish (5 % NaF)



Indications

Treatment of hypersensitive teeth
Sealing the dentinal tubules, e.g. for cavity preparations or on sensitive root surfaces



Advantages

- Easy to apply on wet tooth surfaces
- Esthetic, tooth-shaded varnish
- Fast desensitisation and fluoride release (5 % NaF \triangleq 22,600 ppm fluoride)
- In five pleasant flavours available: melon, mint, cherry, caramel and bubble gum
- Ideal for treating cervical areas after professional cleaning and calculus removal

Advantages of the SingleDose

- Easy, quick and hygienic
- No additional devices required
- No spilling in any position

Advantages of the cartridge

- Multiple use with disposable cannulae
- Perfectly precise application
- Extremely easy application in proximal areas
- Complete fluoride application in only a single step

Application



<i>SingleDose</i>		
Flavour	50 x 0.40 ml	200 x 0.40 ml
Melon	REF 1269	REF 1271
Caramel	REF 2226	REF 2229
Cherry	REF 2227	REF 2230
Mint	REF 2228	REF 2231
Bubble gum	REF 2238	REF 2239
Flavour	48 x 0.40 ml	50 x 0.25 ml
Melon	–	REF 1268
Mixed*	REF 2225	–
Cartridge		
Flavour	5 x 1.70 ml	
Melon	REF 2235	
REF 2167	Application cannulae type 43, 100 pcs.	
*(12 each of melon, caramel, cherry, mint)		
REF 1272 and 2235 are not available in Canada		

Professional cleaning

Fissure sealing

Prophylaxis

Desensitiser

Whitening

Prophylaxis Set

VOCO Profluorid® Varnish

Fluoride-containing dental desensitising varnish (5 % NaF)



Indications

Treatment of hypersensitive teeth
Sealing the dentinal tubules, e.g. for cavity preparations or on sensitive root surfaces

Advantages

- Easy to apply on wet tooth surfaces
- Esthetic, tooth-shaded varnish
- Economical application in thin layers, high yield
- Ideal for treating cervical areas after professional cleaning and calculus removal



Tube	10 ml	50 ml
Flavour		
Melon	REF 1267	REF 1272
Caramel	REF 2232	–
Cherry	REF 2233	–
Mint	REF 2234	–
Flavour	4 x 10 ml	
Mixed	REF 2971	

Admira® Protect

Light-curing ORMOCER® based protective desensitiser



Indications

Treatment of hypersensitive dentine
Treatment of cervical areas and crown margins
Treatment of cervical areas after professional cleaning and calculus removal

Advantages

- Biocompatible
- Permanent elimination of hypersensitivity
- Reliable adhesion
- Special filler technology for high abrasion resistance
- Fluoride release

Admira® Protect in practical SingleDose

- Easy, quick and hygienic
- No additional devices required
- No spilling in any position



REF 1650	Bottle 4.5 ml, accessories
REF 1651	SingleDose 50 pcs., accessories
REF 1652	SingleDose 200 pcs., accessories
REF 2338	Brush holder for VOCO disposable dental brushes and Micro Tim, 5 pcs.
REF 2249	Micro Tim, fine application brushes, 100 pcs.

Professional cleaning

Fissure sealing

Prophylaxis

Desensitiser

Whitening

Prophylaxis Set

Perfect Bleach®

Whitening gel for discoloured teeth (10 % / 16 % carbamide peroxide)



Indications

Gentle and permanent tooth whitening for vital and non-vital teeth e.g. in cases of staining due to medication, fluorosis, food, trauma, ageing etc.

Advantages

- Simple user-friendly application
- Gentle on tooth substance and existing restorations
- Significant whitening effect already after a short time
- Pleasant menthol flavour
- Set in attractive cosmetic bag

Mini set

An attractive cosmetic bag contains four syringes of whitening gel, the storage box and the graphically assisted instructions for use.

Especially suitable for

- Dental practitioners who contract an external laboratory to fabricate the tray
- Patients who already own a whitening tray

Set

The set contains six syringes of whitening gel, the storage box, one syringe of Block Out Gel LC, the material for two trays and the grafically assisted instructions for use.

Especially suitable for

- Dental practitioners who fabricate the whitening gel tray in their own surgery

Perfect Bleach® 10 %	
REF 1658	Mini set syringe 4 × 2.4 ml with 10 % carbamide peroxide, storage box, cosmetic bag
REF 1662	Syringe 3 × 2.4 ml with 10 % carbamide peroxide
Perfect Bleach® 16 %	
REF 1659	Mini set syringe 4 × 2.4 ml with 16 % carbamide peroxide, storage box, cosmetic bag
REF 1664	Set syringe 6 × 2.4 ml with 16 % carbamide peroxide, Block Out Gel LC syringe 1.2 ml, material for 2 trays, storage box, cosmetic bag, shade guide, accessories
REF 1665	Syringe 3 × 2.4 ml with 16 % carbamide peroxide
<i>Not available in Canada</i>	

Professional cleaning

Fissure sealing

Prophylaxis

Desensitiser

Whitening

Prophylaxis Set

Perfect Bleach® Office+

Whitening gel for discoloured teeth

Indications

Perfect Bleach Office+ is suited for whitening individual or multiple discoloured, vital or devitalised teeth. The whitening success depends on the natural tooth shade as well as the intensity and cause of the discolouration. It is possible to whiten discolourations of organic origin, which generally have the following causes:

- discolouration as a result of traumata
- discolouration caused by medication (e.g. tetracycline)

Discolourations of inorganic origin, such as components of amalgam (silver), are not whitened, nor are restorations

Advantages

- 35 % hydrogen peroxide concentration for safe and fast whitening of discolourations
- Good contrast to the tooth and LC Dam due to red coloured material
- Can be used for both internal and external whitening
- Perfect Bleach Office+ in the convenient QuickMix syringe
 - only the amount of gel needed is activated
 - no mixing errors and the gel is always fresh
- Composite-based gingiva protection (LC Dam)
- No painful heat-loading from light-curing the gingiva protection

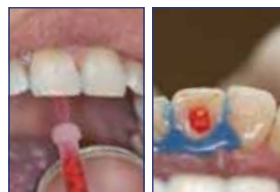
Clinical Case



Marginal, clinically perfect root filling, clearly visible discolouration in tooth 11



Palatal view with applied gingiva protector LC Dam



Insertion of the whitening gel into the cavity with the enclosed fine cannula



Careful rinsing and aspiration of the whitening gel



Tight obturation of the cavity with a glass ionomer material



Aesthetically convincing result

Source: Dierk Thalmann, Cuxhaven / Germany



35 %
H₂O₂

auto
mix

REF 1672	Set QuickMix syringe 2 × 4 ml, LC Dam syringe 2 × 2 g, accessories
REF 1673	QuickMix syringe 4 ml, accessories
REF 1655	LC Dam syringe 2 g, accessories
REF 2194	Mixing tips type 14, 50 pcs.
REF 2195	Mixing tips type 15 (with intraoral tips type 1), 50 pcs.
REF 2146	Application cannulae type 41, 100 pcs.

Not available in Canada, Ireland and United Kingdom



Direct Restoration

Stability. Aesthetics. Economy.

Conservative dentistry requires your expertise as a dentist in conjunction with absolutely reliable, high-quality restorative materials. For direct restorations VOCO offers you restoratives of a number of material classes for a great variety of indications. But there is one thing all our restorative materials have in common: our composites, compomers, ORMOCER[®]s and glass ionomer materials, as well as liners, bonding materials and glass fibre strands guarantee that results are characterised by stability and durability. Moreover, patients are looking for individual solutions to make their smile radiant. Our products, while being easy to use and quick to apply, help your restorations become predictable and plannable as well as aesthetic.



Calcimol LC

Light-curing radiopaque calcium hydroxide paste



REF 1047	Tube 2 × 5 g
REF 1307	Syringe 2 × 2.5 g, accessories
REF 2146	Application cannulae type 41, 100 pcs.

Indications

Indirect pulp capping
Lining under all filling materials

Advantages

- Effective protection of the pulp
- Ready-to-use one-component material
- Time-saving light-curing and direct application from the non-dripping NDT®-syringe
- High level of acid-resistance, protection when applying the total-etch technique
- Supports the formation of tertiary dentine

Calcicur®

Ready-to-use calcium hydroxide paste



REF 1093	Syringe 2.5 g, accessories
REF 1096	Syringe 3 × 2.5 g, accessories
REF 2131	Application cannulae type 47, 30 pcs.

Indications

Indirect capping for the treatment of caries profunda
Direct capping when the pulp is opened or a pulpotomy is performed
Lining of cavities to prevent exposure to acid media when using cements
For temporary filling of root canals

Advantages

- Suitable for use under any lining or restorative material
- Immediately ready for use
- Antimicrobial effect due to high pH value (12.5)
- Calcium hydroxide content of 45 %
- Radiopacity
- Promotes the formation of tertiary dentine
- Effective pulp protection

Ionoseal®

Light-curing glass ionomer composite liner

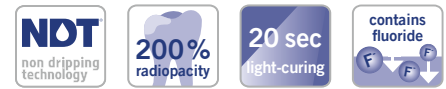


Indications

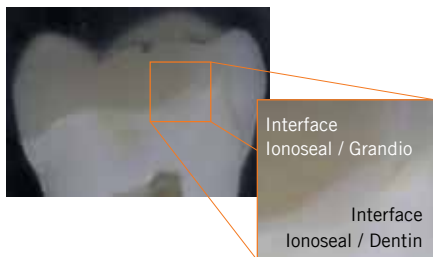
- Lining under all types of filling material
- Extended fissure sealing
- Restoration of smaller lesions

Advantages

- Ready-to-use one-component material
- Time-saving: light-curing in seconds
- Quick and hygienic application
- High compressive strength (226 MPa)
- Fluoride release against secondary caries
- High biocompatibility
- Radiopaque



REF 1126	Tube 2 × 4 g
REF 1326	Syringe 3 × 2.5 g, accessories
REF 2146	Application cannulae type 41, 100 pcs.

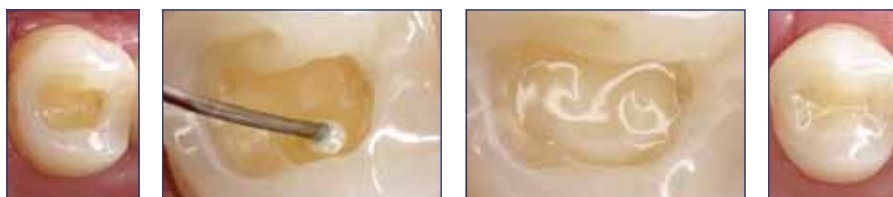


High radiopacity of Ionoseal, shown on the 28



Gap-free link between hard dental tissue, Ionoseal and the restorative (Grandio) – cross-cut microscope picture

Clinical Case



Prepared cavity Direct application Ionoseal Finished lining Final restoration

Source: Dr. Marcelo Balsamo, São Paulo / Brazil

Liner

Bonding

Restoratives (ORMOCER®s)

Restoratives (Composites)

Restoratives (Compomers)

Restoratives (Glass ionomer materials)

Futurabond® U

Dual-curing universal adhesive



Indications

Direct and indirect restorations using any light-curing, self-curing or dual-curing methacrylate-based restorative, core build-up or luting composite

Intraoral repair of fillings, ceramic veneers and all-ceramic restorations without additional primer

Treatment of hypersensitive tooth necks

Protective varnish for glass ionomer cement restorations

Sealing of cavities prior to amalgam restorations or prior to temporary luting

Luting of root posts with dual-curing or self-curing luting composites

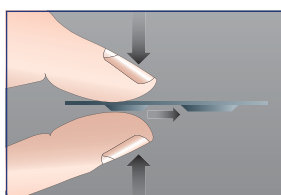
Advantages

- One bond for all cases! Makes all other adhesives in the practice redundant!
- Self-etch, selective-etch or total-etch – free choice for the practitioner
- Outstanding versatility of application
 - for direct or indirect restorations
 - fully compatible with all light-curing, dual-curing or self-curing methacrylate-based composites without additional activator for dual-curing
 - secure adhesion to various materials such as metal, zirconium dioxide or aluminium oxide, as well as silicate ceramics without additional primer
 - treatment of hypersensitive tooth necks
 - protective varnish for glass ionomer cement restorations etc.
- Applied in one layer – only 35 seconds total working time
- Outstanding adhesion compared to other universal, self or total-etch adhesives
- Moisture tolerant
- Refrigeration not necessary

Futurabond® U in practical *SingleDose*

- Easy, quick and hygienic
- No additional devices required
- No spilling in any position

It's just that easy – simply press, simply bond!



REF 1571	<i>SingleDose</i> 50 pcs., accessories
REF 1572	<i>SingleDose</i> 200 pcs., accessories
REF 1574	<i>SingleDose</i> trial pack (<i>SingleDose</i> 20 pcs., Vococid gel syringe 2 ml, accessories)
REF 2246	Endo Tim, application brushes, to be used in the root canal, 50 pcs.
REF 2247	Single Tim, application brushes, 100 pcs.

Futurabond® M+

Universal adhesive

Indications

Direct and indirect restorations using any light-curing methacrylate-based restorative, core build-up or luting composite

Intraoral repair of fillings, ceramic veneers and all-ceramic restorations without additional primer

Treatment of hypersensitive tooth necks

Protective varnish for glass ionomer cement restorations

Sealing of cavities prior to amalgam restorations or prior to temporary luting

In combination with Futurabond® M+ DCA (dual-cure activator)

Direct and indirect restorations using any self-curing or dual-curing methacrylate-based restorative, core build-up or luting composite

Luting of root posts with dual-curing or self-curing luting composites

Advantages

- Can be applied with or without phosphoric acid etching
- Excellently suitable for direct or indirect restorations
- Secure adhesion to various materials such as metals, zirconium dioxide or aluminium oxide, as well as silicate ceramics, without additional primer
- Applied in one layer – only 35 seconds total working time

Futurabond® M

One-component light-curing nano-reinforced self-etch bond

Indications

Direct restorations of all cavity classes with all light-curing restoratives

Advantages

- Excellent adhesion to dentine and enamel
- Easy and fast application – one-coat, one-cure technique
- Universal for all light-curing restoratives
- Ideal for paediatric use



REF 1515	Bottle 5 ml, accessories
REF 1516	Bottle 3 × 5 ml
REF 1518	Futurabond M+ DCA – bottle 2 ml
REF 2246	Endo Tim, application brushes, to be used in the root canal, 50 pcs.
REF 2247	Single Tim, application brushes, 100 pcs.
REF 2315	Mixing palettes, 20 pcs.

Futurabond® M

One-component light-curing nano-reinforced self-etch bond

Indications

Direct restorations of all cavity classes with all light-curing restoratives

Advantages

- Excellent adhesion to dentine and enamel
- Easy and fast application – one-coat, one-cure technique
- Universal for all light-curing restoratives
- Ideal for paediatric use



REF 1350	Bottle 5 ml, accessories
REF 1351	Bottle 3 × 5 ml
REF 2247	Single Tim, application brushes, 100 pcs.
REF 2315	Mixing palettes, 20 pcs.

Liner

Bonding

Restoratives (ORMOCER®s)

Restoratives (Composites)

Restoratives (Compomers)

Restoratives (Glass ionomer materials)

Futurabond® DC

Dual-curing self-etch-bond reinforced with nano-fillers



Indications

Direct self- or dual-curing composite restorations and core build-ups

Direct light-curing restoration with composite-, compomer- and ORMOCER® based restoratives

Adhesive luting of root pins / posts with dual or self-curing composite cements

Indirect restoration when using dual- and self-curing resin cements for luting of inlays, onlays, crowns and bridges

Advantages

- Chemical-curing in areas inaccessible with a curing light
- Futurabond DC achieves the same adhesive properties as total-etch preparations without separate etching of the tooth substance
- Moisture-tolerant
- Durable marginal integrity
- Easy and fast application – one-coat, one-cure technique
- Contains fluorides
- No refrigerated storage needed
- Ideal for paediatric use

REF 1163	Bottle 2 × 4 ml (liquid 1 / liquid 2), accessories
REF 1164	<i>SingleDose</i> 50 pcs., accessories
REF 1165	<i>SingleDose</i> 200 pcs., accessories
REF 2246	Endo Tim, application brushes, to be used in the root canal, 50 pcs.
REF 2247	Single Tim, application brushes, 100 pcs.
REF 2315	Mixing palettes, 20 pcs.

Vococid®

Etchant for acid-etch technique

Indications

Etching liquid / gel for use in the enamel etching or in the total-etch technique

Advantages

- Available as a fluid (36.1 % phosphoric acid) or gel (35 % phosphoric acid)
- Blue colouring for visual monitoring during application
- Stable, non-dripping gel
- 60 ml syringe for keeping material in stock



REF 1063	Syringe 5 ml, accessories
REF 1224	Syringe 5 × 2 ml, accessories
REF 1256	Empty syringe 10 × 2 ml
REF 1257	Syringe 60 ml, empty syringe 2 × 2 ml, accessories
REF 2310	Application cannulae type 42, 30 pcs.
REF 2132	Application cannulae type 48, 50 pcs.

Futurabond® NR

Light-curing self-etch-bond reinforced with nano-fillers



Indications

Direct restorations of all cavity classes with all light-curing restoratives

Advantages

- Excellent adhesion to dentine and enamel
- Durable marginal integrity
- Moisture-tolerant
- Easy and fast application – one-coat, one-cure technique
- Universal for all light-curing restoratives
- Ideal for paediatric use
- Contains fluorides
- No refrigerated storage needed



REF 1148	Bottle 2 × 4 ml (liquid A / liquid B), accessories
REF 1152	SingleDose 50 pcs., accessories
REF 1153	SingleDose 200 pcs., accessories
REF 2247	Single Tim, application brushes, 100 pcs.
REF 2315	Mixing palettes, 20 pcs.

Solobond M

Light-curing one-component dentine and enamel bond

Indications

Direct restorations of all cavity classes with all light-curing restoratives

Advantages

- One component – one application
- Excellent adhesion
- High material elasticity and permanently tight margins
- “Stick-immediately-effect” for easy application of the restorative
- Universal for all light-curing restoratives



REF 1226	Bottle 2 × 4 ml
REF 2249	Micro Tim, fine application brushes, 100 pcs.
REF 2315	Mixing palettes, 20 pcs.
REF 2338	Brush holder for VOCO disposable dental brushes and Micro Tim, 5 pcs.



Liner

Bonding

Restoratives (ORMOCER®s)

Restoratives (Composites)

Restoratives (Compomers)

Restoratives (Glass ionomer materials)

Restoratives (Composites)

Page	ORMOCER®s	cavity class	cavity class					base / liner	fissure sealing	restoration of deciduous teeth	core build-up	indirect inlays, onlays, veneers	shades		form of application	material class	filler content [% w/w]
			I	II	III	IV	V						opaque	universal			
25	Admira Fusion	universal / aesthetic / biocompatible	•	•	•	•	•		•	•	•	4	13	1	syringe, Caps	nano-hybrid	84
26	Admira Fusion Flow	universal / aesthetic / biocompatible					•					2	9	1	NDT® syringe	nano-hybrid	74
27	Admira Fusion x-tra	bulk fill / biocompatible	•	•	•	•			•	•			1	1	syringe, Caps	nano-hybrid	84
28	Admira Fusion x-base	bulk fill / biocompatible	• ¹	•	•	•	•		•	•			1	1	NDT® syringe	nano-hybrid	72
Composites																	
29	GrandioSO	universal / aesthetic	•	•	•	•	•			•	•	3	13	1	syringe, Caps	nano-hybrid	89
30	GrandioSO Flow (medium viscosity)	universal / aesthetic	•	•	•	•	•		•			2	10	1	NDT® syringe, Caps	nano-hybrid	81
31	GrandioSO Heavy Flow (high viscosity)	universal / aesthetic	•	•	•	•	•		•			2	10	1	NDT® syringe, Caps	nano-hybrid	83
32	GrandioSO x-tra	bulk fill	•	•	•	•	•			•			4		syringe, Caps	nano-hybrid	86
33	Grandio	universal	•	•	•	•	•		•	•		2	13	1	syringe, Caps	nano-hybrid	87
34	Grandio Flow	universal	• ¹	•	•	•	•		•			2	10		NDT® syringe, Caps	nano-hybrid	80
35	Amaris / Amaris Flow	highly aesthetic / 2-layer system	•	•	•	•	•			•		7		4	syringe, Caps	micro-hybrid	80
36	Amaris Gingiva	highly aesthetic / gingiva-coloured					•					3	1		syringe	micro-hybrid	80
37	VisCalor bulk	bulk fill	•	•	•	•				•			4		Caps	nano-hybrid	83
38	x-tra base	bulk fill	• ¹						•	•			2		NDT® syringe, Caps	micro-hybrid	75
39	x-tra fill	bulk fill	•	•	•	•				•			1		syringe, Caps	micro-hybrid	86
40	Arabesk		•	•	•	•				•			6	1	syringe	micro-hybrid	77
40	Arabesk Flow		•	•	•	•			•				3		syringe, Caps	micro-hybrid	64
41	Polofil Supra		•	•	•	•				•			6	1	syringe	micro-hybrid	77
Compomers																	
41	Twinkly Star	coloured / sparkling								•		8 ²			Caps	compomer	78
41	Twinkly Star Flow	coloured / sparkling								•		2 ²			NDT® syringe	compomer	65

¹ small ² coloured, with glitter effect

An overview of our glass ionomer restorative materials can be found on page 42.

Admira® Fusion

Universal nano-hybrid ORMOCER® restorative material



Indications

- Class I to V restorations
- Base in class I and II cavities
- Reconstruction of traumatically damaged anteriors
- Facetting of discoloured anteriors
- Correction of shape and shade for improved aesthetic appearance
- Locking, splinting of loose teeth
- Repairing veneers, small enamel defects and temporary C&B-materials
- Extended fissure sealing
- Restoration of deciduous teeth
- Core build-up
- Composite inlays

Advantages

- The worldwide first purely ceramic-based restorative material
 - Pure Silicate Technology, i.e., fillers and resin matrix based purely on silicon oxide
 - contains no classic monomers
- Thanks to the most innovative ORMOCER® technology
 - by far the lowest polymerisation shrinkage (1.25 % by volume) and particularly low level of shrinkage stress in comparison to all conventional restorative composites
 - inert, so excellent biocompatible and extremely resistant to discolouration
- Completely universal – meeting highest demands in anterior and posterior regions
 - perfect coordination of translucence with opacity for natural results
 - the optimal selection of shades enables highly flexible working using either the single or multiple shade system
- Excellent handling, simple high-lustre polishing procedure coupled with high surface hardness guarantee first-class long-term results
- Compatible with all conventional bonding agents

Clinical Case



Insufficient amalgam restorations in teeth 46 and 47

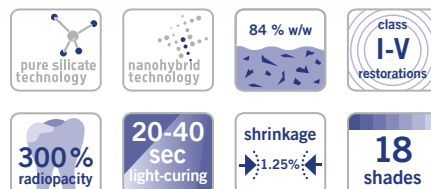


Modeling of the material which is still malleable at this stage



Finished, polished restorations

Source: Dr. Sanzio Marques, Passos / Brazil



REF 2750	Set + bond syringe 5 x 3 g (A2, A3, GA3.25, A3.5, Admira Fusion x-tra), shade guide + Futurabond U <i>SingleDose</i> 20 pcs., accessories	
REF 2778	Trial kit Caps 9 x 0.2 g (3 each of A2, A3, A3.5), Admira Fusion Flow syringe 2 g A3, Admira Fusion x-tra Caps 3 x 0.2 g universal, accessories	
REF 2780	Set + bond Caps 75 x 0.2 g (15 each of A2, A3, GA3.25, A3.5, Admira Fusion x-tra), shade guide + Futurabond U <i>SingleDose</i> 20 pcs., accessories	
REF 2752	Shade guide	
REF 9301	Dispenser – Caps	
Shade	Syringe 3 g	Caps 15 x 0.2 g
A1	REF 2754	REF 2782
A2	REF 2755	REF 2783
A3	REF 2756	REF 2784
A3.5	REF 2758	REF 2786
A4	REF 2759	REF 2787
B1	REF 2762	REF 2790
B2	REF 2763	REF 2791
B3	REF 2764	REF 2792
C2	REF 2766	REF 2794
D3	REF 2768	REF 2796
OA1	REF 2770	REF 2798
OA2	REF 2771	REF 2799
OA3	REF 2772	REF 2800
OA3.5	REF 2773	REF 2801
BL	REF 2775	REF 2803
Incisal	REF 2776	REF 2804
GA3.25	REF 2757	REF 2785
GA5	REF 2760	REF 2788
Mixed	–	REF 2806*

*(3 each of B1, B3, D3, BL, Incisal)

Liner

Bonding

Restoratives (ORMOCER®S)

Restoratives (Composites)

Restoratives (Compomers)

Restoratives (Glass ionomer materials)

Admira® Fusion Flow

Flowable light-curing nano-hybrid ORMOCER® restorative material

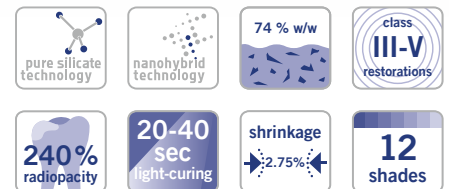


Indications

- Filling of small cavities and extended fissure sealing
- Blocking out undercuts
- Lining or coating cavities
- Fillings of class III - V cavities
- Repairing fillings, veneers and temporary restorations
- Luting translucent prosthetic pieces
- Locking, splinting of loose teeth

Advantages

- The worldwide first purely ceramic-based flowable restorative material
 - pure Silicate Technology, i.e. fillers and resin matrix based purely on silicon oxide
 - contains no classic monomers
- Thanks to the most innovative ORMOCER® technology
 - extremely low polymerisation shrinkage (2.75 % by volume) and particularly low level of shrinkage stress in comparison to conventional flowable restorative composites
 - inert, so excellent biocompatible and extremely resistant to discolouration
- “Flow on demand” – the material becomes flowable only when under pressure or in motion. When the application has been completed, it is stable enough not to flow out of the cavity.
- Excellent surface affinity with complete wetting of the cavity walls
- VOCO's patented, non-running and non-dripping NDT®-syringe ensures reliable and perfectly precise application. Undesirable loss of material is thus a thing of the past.
- 12 shades for aesthetic restorations – perfectly matching the shade range of the packable version, Admira Fusion
- Excellent handling, simple high-lustre polishing procedure coupled with high surface hardness guarantee first-class long-term results
- Compatible with all conventional bonding agents



REF 2816	Set syringe 5 × 2 g (A1, A2, A3, A3.5, WO), shade guide, accessories
REF 2146	Application cannulae type 41, 100 pcs.

Shade	Syringe 2 × 2 g
A1	REF 2818
A2	REF 2819
A3	REF 2820
A3.5	REF 2821
A4	REF 2822
B1	REF 2824
B2	REF 2825
C2	REF 2826
Incisal	REF 2828
OA2	REF 2829
BL	REF 2831
WO	REF 2832

Clinical Case



Mesial caries on tooth 12, disto-palatal caries on tooth 11



Simple application and optimal wetting behaviour of Admira Fusion Flow



Outstanding result created with Admira Fusion Flow / Admira Fusion

Source: Dr. Walter Denner, Fulda / Germany

Admira® Fusion x-tra

Nano-hybrid ORMOCER® restorative material, 4 mm



Indications

- Class I and II posterior restorations
- Base in class I and II cavities
- Class V restorations
- Locking, splinting of loose teeth
- Repairing veneers, small enamel defects and temporary C&B-materials
- Extended fissure sealing
- Restoration of deciduous teeth
- Core build-up

Advantages

- Purely ceramic-based, bulk fill restorative material
- Fast and high-quality – reliable curing of 4 mm layers
- Thanks to the most innovative ORMOCER® technology
 - by far the lowest polymerisation shrinkage (1.25 % by volume) and particularly low level of shrinkage stress, providing optimal marginal integrity
 - inert, so excellent biocompatible and extremely resistant to discolouration
- Excellent handling, simple high-lustre polishing procedure coupled with high surface hardness guarantee first-class long-term results
- Universal shade with chameleon effect
- Compatible with all conventional bonding agents

Clinical Case



Insufficient composite restoration in tooth 45



Prepared cavity awaiting filling



Application of Admira Fusion x-tra in 4-mm layers



Functional and aesthetic final result

Source: Dr. Walter Denner, Fulda / Germany



pure silicate technology	nanohybrid technology	84 % w/w	class I, II, V restorations
300 % radiopacity	20 sec light-curing	shrinkage 1.25%	4 mm bulk fill

REF 2810	Syringe 3 g universal
REF 2811	Caps 15 × 0.2 g universal
REF 9301	Dispenser – Caps

Liner

Bonding

Restoratives (ORMOCER®S)

Restoratives (Composites)

Restoratives (Compomers)

Restoratives (Glass ionomer materials)

Admira® Fusion x-base

Flowable nano-hybrid ORMOCER® base restorative material, 4 mm



Indications

Base in class I and II cavities

Cavity lining under direct restorative materials in class I and II cavities

Small, non occlusal stress-bearing class I restorations according to minimally invasive filling therapy

Class III and V restorations

Extended fissure sealing

Undercut blockout

Repair of small enamel defects

Repair of small defects in aesthetic indirect restorations

Repair of temporary C&B-materials

Core build-up



REF 2812	Syringe 2 × 2 g universal, accessories
REF 2148	Application cannulae type 46, 100 pcs.

Advantages

- Purely ceramic-based
- Fast and high-quality – 4 mm restoration base in one simple step
- Thanks to the most innovative ORMOCER® technology
 - extremely low polymerisation shrinkage (2.5 % by volume) and particularly low level of shrinkage stress, providing optimal marginal integrity
 - inert, so excellent biocompatible and extremely resistant to discolouration
- Perfect surface affinity for outstanding adaption
- Excellent handling, even in difficult-to-access areas
- Available in the non-dripping NDT®-syringe
- Compatible with all conventional bonding agents and composites / ORMOCER® restorative materials

Admira® Bond

One-component dentine and enamel bond ORMOCER® based



Indications

Direct restoration with all types of light-curing restoratives (ORMOCER®s, composites, compomers)

Advantages

- ORMOCER® based
- High adhesion and long-lasting marginal tightness
- One component – one layer
- Universal for all light-curing restoratives



REF 2432	Bottle 2 × 4 ml
REF 2479	Bottle 4 ml



Grandio®SO

Universal nano-hybrid restorative material



Indications

- Fillings of class I to V cavities
- Reconstruction of traumatically damaged anteriors
- Facetting of discoloured anteriors
- Correction of shape and shade for improved aesthetic appearance
- Locking, splinting of loosened teeth
- Repairing veneers
- Restoration of deciduous teeth
- Core build-up under crowns
- Composite inlays

Advantages

- Toothlike restorative for reliable restorations
- Very high filler content of 89 % w/w
- All-purpose for the highest demands in both the anterior and posterior tooth regions
- Excellent light resistance
- Optimal coordination of opacity and translucency for results that mirror the natural tooth using only one shade
- Smooth consistency, non-sticky, best sculptability
- Easily polishes to a high gloss – lasting, smooth surface
- Compatible with all conventional bonds

Clinical Cases



Fillings in 14, 15 in need of replacement due to secondary caries



15 with the distal marginal ridge modelling complete



Completed restoration

Source: Dr. Walter Denner, Fulda / Germany



Insufficient composite fillings of teeth 11 and 21



Application of increments using GrandioSO A3.5



Completed restoration

Source: Dr. Sanzio Marques, Passos / Brazil



nanohybrid technology

89 % w/w

class I-V restorations

320% radiopacity

10-20 sec light-curing

shrinkage 1.6%

17 shades

REF 2600	Set syringe 5 × 4 g (A2, A3, A3.5, GA3.25, GA5), shade guide	
REF 2601	Set + bond syringe 5 × 4 g (A2, A3, A3.5, GA3.25, GA5), shade guide + Futurabond NR <i>SingleDose</i> 50 pcs., accessories	
REF 2640	Set Caps 80 × 0.25 g (16 each of A2, A3, A3.5, GA3.25, GA5), shade guide	
REF 2607	Shade guide	
REF 9301	Dispenser – Caps	
Shade	Syringe 4 g	Caps 16 × 0.25 g
A1	REF 2610	REF 2650
A2	REF 2611	REF 2651
A3	REF 2612	REF 2652
A3.5	REF 2614	REF 2654
A4	REF 2615	REF 2655
B1	REF 2619	REF 2659
B2	REF 2620	REF 2660
B3	REF 2621	REF 2661
C2	REF 2624	REF 2664
D3	REF 2627	REF 2667
Incisal	REF 2629	REF 2669
OA1	REF 2630	REF 2670
OA2	REF 2631	REF 2671
OA3.5	REF 2633	REF 2673
BL	REF 2635	REF 2675
GA3.25	REF 2613	REF 2653
GA5	REF 2616	REF 2656

Liner

Bonding

Restoratives (ORMOCER®s)

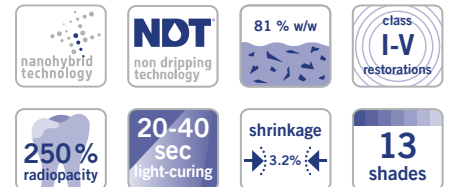
Restoratives (Composites)

Restoratives (Compomers)

Restoratives (Glass ionomer materials)

Grandio®SO Flow

Flowable universal nano-hybrid restorative material



Indications

- Fillings of class I to V cavities
- Minimally invasive filling therapy
- Extended fissure sealing
- Blocking out undercuts
- Lining or coating cavities
- Repairing fillings and veneers
- Luting translucent prosthetic pieces (e.g., full ceramic crowns, etc.)
- Interlocking and splinting teeth (e. g., with glass fibre strands)
- Use as a base material in combination with glass fibres or similar products for fabricating semi-permanent crowns and bridges

Advantages

- Medium viscous flow composite, i.e. outstanding flow behaviour with complete wetting of the cavity walls
- Universal application – for indication-appropriate treatment of all cavity classes
- Physical properties superior to those of various other packable materials, e.g. hardness, stability, abrasion resistance
- Very high filler content of over 80 % w/w
- Safe and precise application
- 13 shades for aesthetic restorations – perfectly coordinated with GrandioSO
- High shade stability
- Very good polishability and durable brilliance
- Extremely high radiopacity (500 %Al) of the shade WO for especially good contrast to the tooth substance and to other restoratives
- Available in the non-dripping NDT®-syringe and Flow-Caps with flexible metal cannulae

REF 2720	Set syringe 5 × 2 g (A1, A2, A3, A3.5, WO), shade guide, accessories	
REF 2607	Shade guide	
REF 9301	Dispenser – Caps	
REF 2146	Application cannulae type 41, 100 pcs.	
Shade	Syringe 2 × 2 g	Caps 16 × 0.25 g
A1	REF 2722	REF 2742
A2	REF 2723	REF 2743
A3	REF 2724	REF 2744
A3.5	REF 2725	REF 2745
A4	REF 2726	REF 2746
B1	REF 2729	REF 2749
B2	REF 2730	–
C2	REF 2732	–
Incisal	REF 2733	–
OA2	REF 2734	–
BL	REF 2736	–
WO	REF 2737	–
GA5	REF 2727	–

Grandio®SO Heavy Flow

Flowable universal nano-hybrid restorative material – highly viscous



Indications

- Fillings of class I to V cavities
- Minimally invasive filling therapy
- Extended fissure sealing
- Blocking out undercuts
- Lining or coating cavities
- Repairing fillings and veneers
- Luting translucent prosthetic pieces (e.g., full ceramic crowns, etc.)
- Interlocking and splinting teeth (e.g., with glass fibre strands)
- Use as a base material in combination with glass fibres or similar products for fabricating semi-permanent crowns and bridges

Advantages

- Increased stability in comparison to conventional flowables, i.e. no undesirable runoff
- Universal application – for indication-appropriate treatment of all cavity classes
- Physical properties superior to those of various other packable materials, e.g. hardness, stability, abrasion resistance
- Very high filler content of 83 % w/w
- Precise application with complete wetting of the cavity walls
- Precise dosing without excess for time-saving work
- Undercuts, approximal boxes and paragingival areas can be easily filled
- Ideal for use in combination with GrandTEC
- 13 shades for aesthetic restorations – perfectly coordinated with GrandioSO
- High shade stability
- Very good polishability and durable brilliance
- Available in the non-dripping NDT®-syringe and in Flow-Caps with flexible metal cannulae

Clinical Case



Typical V-shaped cervical defect on 13



Application of GrandioSO Heavy Flow after conditioning and bonding



Restoration immediately after polishing

Source: Dr. Walter Denner, Fulda / Germany



nanohybrid technology	NDT non dripping technology	83 % w/w	class I-V restorations
260 % radiopacity	20-40 sec light-curing	shrinkage 3%	13 shades

REF 2680	Set syringe 5 × 2 g (A2, A3, A3.5, WO, GA5), shade guide, accessories	
REF 2607	Shade guide	
REF 9301	Dispenser – Caps	
REF 2148	Application cannulae type 46, 100 pcs.	
Shade	Syringe 2 × 2 g	Caps 16 × 0.25 g
A1	REF 2684	REF 2704
A2	REF 2685	REF 2705
A3	REF 2686	REF 2706
A3.5	REF 2687	REF 2707
A4	REF 2688	REF 2708
B1	REF 2690	REF 2712
B2	REF 2691	–
C2	REF 2692	–
OA2	REF 2693	–
Incisal	REF 2694	–
BL	REF 2695	–
WO	REF 2696	–
GA5	REF 2689	–

Liner

Bonding

Restoratives (ORMOCER®s)

Restoratives (Composites)

Restoratives (Compomers)

Restoratives (Glass ionomer materials)

Grandio®SO x-tra

Aesthetic nano-hybrid bulk restorative material



Indications

Class I and II posterior restorations

Base in class I and II cavities

Class V restorations

Locking, splinting of loose teeth

Repairing veneers, enamel defects and temporary C&B-materials

Extended fissure sealing

Restoration of deciduous teeth

Core build-up

Advantages

- Quick and aesthetic posterior restorations
- Higher level of hardness than other bulk fill composites – on the surface, as well as at a depth of 4 mm
- Very high filler content (86 % w/w) and extremely low polymerisation shrinkage (1.4 % by volume)
- In shades A1, A2, A3 and universal
- High shade stability
- Excellent handling and simple high-lustre polishing procedure



Shade	Syringe 4 g	Caps 16 x 0.25 g
Universal	REF 2595	REF 2714
A1	REF 2596	REF 2715
A2	REF 2597	REF 2716
A3	REF 2598	REF 2717
Shade	Syringe 5 x 4 g	Caps 80 x 0.25 g
A3	REF 2599	REF 2719

GrandTEC®

Resin-impregnated light-curing glass fibre strands for dental adhesive technique



Indications

Stabilisation of teeth

– after orthodontic therapy

– after periodontal therapy

For support in trauma therapy

– locking and splinting avulsed or loosened teeth

– fragment fixation after fracture

For reinforcing / fabricating provisional bridges made from composite and temporary C&B-materials

For temporary treatment after extraction and replacing a missing tooth using an artificial tooth

For temporary or semi-permanent treatment of a tooth space using an extracted, natural tooth

For temporary treatment after placing an implant during the osseointegration of the implant

Advantages

- Additional product for reinforcing composite / flow composite in traumatology, periodontics, orthodontics, conservative dentistry and prosthodontics

REF 1168	Glass fibre strands 5 x 55 mm
REF 1169	Test Kit 5 glass fibre strands 55 mm each, model, application aids, GrandioSO Heavy Flow syringe 2 x 2 g A3, accessories

Grandio®

Universal nano-hybrid restorative material



Indications

- Class I to V fillings
- Reconstruction of traumatically affected anteriors
- Facetting of discoloured anteriors
- Correction of shape and shade for better aesthetic appearance
- Locking, splinting of loose teeth
- Repairing veneers
- Filling deciduous teeth
- Core-build-up under crowns
- Composite inlays

Advantages

- Excellent physical properties for long-lasting restorations
- Significantly lower polymerisation shrinkage than conventional composites
- High filler content of 87 % w/w
- Extremely high abrasion resistance
- High transverse strength
- Smooth consistency for convenient handling
- Excellent aesthetics
- Can be used with all dentine / enamel bonding agents
- Available in 16 shades
- Shade guide made from original material



nanohybrid
technology

87 % w/w

class
I-V
restorations

250%
radiopacity

20 sec
light-curing

shrinkage
↔ 1.6% ↔

16
shades

REF 1800	Set syringe 5 × 4 g (A1, A2, A3, A3.5, B2), shade guide	
REF 1801	Set + bond syringe 5 × 4 g (A1, A2, A3, A3.5, B2), shade guide + Futurabond NR <i>SingleDose</i> 50 pcs., accessories	
REF 1805	Syringe 10 × 4 g A3	
REF 1830	Set Caps 50 × 0.25 g (10 each of A1, A2, A3, A3.5, B2), shade guide	
REF 1899	Shade guide	
REF 9301	Dispenser – Caps	
Shade	Syringe 4 g	Caps 20 × 0.25 g
A1	REF 1810	REF 1840
A2	REF 1811	REF 1841
A3	REF 1812	REF 1842
A3.5	REF 1813	REF 1843
A4	REF 1814	REF 1844
B1	REF 1824	REF 1854
B2	REF 1815	REF 1845
B3	REF 1816	REF 1846
C2	REF 1817	REF 1847
C3	REF 1818	REF 1848
D2	REF 1825	REF 1855
D3	REF 1819	REF 1849
Incisal	REF 1820	REF 1850
OA2	REF 1821	REF 1851
OA3.5	REF 1822	REF 1852
BL	REF 1823	REF 1853

Liner

Bonding

Restoratives (ORMOCER®s)

Restoratives (Composites)

Restoratives (Compomers)

Restoratives (Glass ionomer materials)

Grandio® Flow

Flowable universal nano-hybrid restorative material



Indications

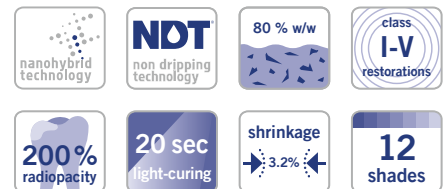
- Filling minimally invasive cavities of all classes
- Filling small class I cavities and extended fissure sealing
- Filling class II - V cavities including V-shaped defects and cervical caries
- Blocking out undercuts
- Lining or coating cavities
- Repairing fillings and veneers
- Luting translucent prosthetic pieces (e.g. full ceramic crowns, etc.)

Advantages

- Optimal flowability
- High filler content of 80 % w/w
- Exact shade match to Grandio
- Excellent wetting properties
- Microhybrid composite – like physical properties
- Significantly lower polymerisation shrinkage than conventional flowables
- Very good abrasion resistance
- High transverse strength
- Can be used with all conventional bonding agents
- The shades BL (bleach light) and WO (white opaque) fulfil special indications: Bleach light is suited for bleached teeth and for use in paediatric dentistry. The shade white opaque makes an ideal restoration base on e.g. discoloured dentine areas and in core build-up

Grandio® Flow in the NDT®-syringe

- NDT® means non-dripping-technology
- Especially for fine-flowing materials
- Can be dosed and applied precisely
- Without any loss of material



REF 1860	Set syringe 8 × 2 g (A1, 2 × A2, 2 × A3, A3.5, B2, OA2), shade guide, accessories
REF 1899	Shade guide
REF 9301	Dispenser – Caps
REF 2146	Application cannulae type 41, 100 pcs.

Shade	Syringe 2 × 2 g	Caps 20 × 0.25 g
A1	REF 1863	REF 1880
A2	REF 1864	REF 1881
A3	REF 1865	REF 1882
A3.5	REF 1866	REF 1883
A4	REF 1868	REF 1884
B1	REF 1869	REF 1885
B2	REF 1867	REF 1886
C2	REF 1873	REF 1887
D2	REF 1874	–
OA2	REF 1870	REF 1889
BL	REF 1871	–
WO	REF 1872	REF 1891

Amaris® · Amaris® Flow

Highly aesthetic light-curing restorative material



Indications

- Aesthetic restoration of class III, IV and V cavities in anterior teeth
- Aesthetic restoration of class I, II and V cavities in posterior teeth
- Reconstruction of traumatically damaged anterior teeth
- Direct and indirect composite veneers and facing of discoloured anterior teeth
- Shape and shade correction for improved aesthetics
- Repairing highly aesthetic porcelain, e.g. veneers
- Splinting of anterior teeth

Advantages

- Two simple steps, perfect results
- Layering like in nature: shades are created from the inside of the tooth
- Simple and precise shade match
- Natural shade transitions automatically
- Natural aesthetics can be achieved with only 11 shades in a simple layer technique
- Easy to learn, fast aesthetic results
- Intuitive approach, no preconceived shades
- Non-sticky consistency is ideal for modelling and shaping
- Long resistance to ambient and chair light
- Optimal polishability
- Natural fluorescence and high colour stability
- Good chameleon effect for invisible restorations

Advantages Amaris® Flow

- The ideal addition to Amaris
- Simple modelling of the incisal edge
- Easy wetting
- Fine cannula allows to apply small amounts

REF 1930	Set syringe 8 × 4 g (O1, O2, O3, O4, O5, TL, TN, TD), Amaris Flow syringe 2 × 1.8 g (HT, HO), shade guide, accessories
REF 1931	Set + bond syringe 8 × 4 g (O1, O2, O3, O4, O5, TL, TN, TD), Amaris Flow syringe 2 × 1.8 g (HT, HO), shade guide + Futurabond NR <i>SingleDose</i> 50 pcs., accessories
REF 1932	Set syringe 5 × 4 g (O1, O2, TL, TN, TD), shade guide
REF 1949	Starter set Caps 32 × 0.25 g (4 each of O1, O2, O3, O4, O5, TL, TN, TD), Amaris Flow syringe 2 × 1.8 g (HT, HO), shade guide, accessories
REF 1950	Set Caps 128 × 0.25 g (16 each of O1, O2, O3, O4, O5, TL, TN, TD), Amaris Flow syringe 2 × 1.8 g (HT, HO), shade guide, accessories
REF 1969	Shade guide
REF 9301	Dispenser – Caps
REF 2144	Application cannulae type 44, 100 pcs.
Base shade	
Opaque	Syringe 4 g Caps 16 × 0.25 g
O1	REF 1933 REF 1953
O2	REF 1934 REF 1954
O3	REF 1935 REF 1955
O4	REF 1936 REF 1956
O5	REF 1937 REF 1957
O Bleach	REF 1938 REF 1958
Enamel shade	
Translucent	Syringe 4 g Caps 16 × 0.25 g
Light, TL	REF 1940 REF 1960
Neutral, TN	REF 1941 REF 1961
Dark, TD	REF 1942 REF 1962
Amaris® Flow	
Special shade	Syringe 2 × 1.8 g
High translucent, HT	REF 1945
High opaque, HO	REF 1946

REF 1932 and 1949 are not available in Canada

Liner

Bonding

Restoratives (ORMOCER®s)

Restoratives (Composites)

Restoratives (Compomers)

Restoratives (Glass ionomer materials)

Amaris® Gingiva

Highly aesthetic light-curing restorative material in gingiva shades



REF 1970	Set syringe 4 g base shade, syringe 3 × 1.2 g opaquers (white, light, dark), shade guide, accessories
REF 1971	Syringe 4 g nature
REF 2147	Application cannulae type 45, 100 pcs.
REF 2309	Disposable brushes for dental brush holder, 100 pcs.
REF 2338	Brush holder for VOCO disposable dental brushes and Micro Tim, 5 pcs.

Indications

Class V restorations (cervical caries, root erosion, V-shaped defects) especially in cases of retreating gingiva e.g. as a result of periodontic disease

Covering of exposed discoloured hyper-sensitive cervical areas, especially in the visible anterior area

Highly aesthetic correction of malpositions of teeth, for direct veneers, facings and corrections of the red-white aesthetics

Advantages

- One base shade, combined with three mixable opaquers, can reproduce almost all gingival shades
- Aesthetic and functional solution for cavities and V-shaped defects in cervical areas exposed by gingival recession
- Latest composite technology – Amaris know-how in gingiva shades

FinalTouch®

Light-curing characterisation material



REF 2321	Set syringe 5 × 1.5 g (white, blue, yellow, orange, brown), accessories
REF 2323	Syringe 1.5 g white, accessories
REF 2324	Syringe 1.5 g blue, accessories
REF 2325	Syringe 1.5 g yellow, accessories
REF 2326	Syringe 1.5 g orange, accessories
REF 2327	Syringe 1.5 g brown, accessories
REF 2147	Application cannulae type 45, 100 pcs.

Not available in Canada

Indications

Personalised characterisation of direct and indirect composite restorations

Masking of tooth discolourations

Characterisation of chairside CAD / CAM veneers

Advantages

- Reproduction of enamel characteristics
- Perfect extension of VOCO's range of composite and ORMOCER® restorative materials
- Excellent handling for high-aesthetic results
- Fine material structure and homogeneous consistency for accurate application
- In the non-dripping NDT®-syringe
- 5 colours with opacity corresponding to the area of application

VisCalor® bulk

Thermoviscous bulk fill composite



Indications

- Class I and II posterior restorations
- Base in class I and II cavities
- Class V restorations
- Locking, splinting of loose teeth
- Repairing veneers, enamel defects and temporary C&B-materials
- Extended fissure sealing
- Restoration of deciduous teeth
- Core build-up

Advantages

- Heating of the material makes it flowable for the application and then sculptable immediately afterwards (thermoviscous technology)
- Optimal flowing to margins and undercut regions – minimises risk of marginal gaps
- 4 mm bulk fill without covering layers
- Bubble-free application
- One universal and three aesthetic shades
- Slender cannula – ideal for hard-to-reach areas

TVT thermo-viscous- technology	nanohybrid technology	83 % w/w	class I, II, V restorations
10-20 sec light-curing	shrinkage 1.4%	4 mm bulk fill	4 shades

REF 6062	Set Dispenser Caps 80 × 0.25 g (16 × universal, 16 × A1, 16 × A2, 32 × A3), VisCalor Dispenser
REF 6065	Caps 16 × 0.25 g universal
REF 6066	Caps 16 × 0.25 g A1
REF 6067	Caps 16 × 0.25 g A2
REF 6068	Caps 16 × 0.25 g A3
<i>Not available in Canada</i>	

Clinical Case



Cleaned cavities



Applying the heated VisCalor bulk with its superb creamy consistency and slender cannula



Adapting the sculptable VisCalor bulk



Polished and rehydrated class II cavities the day after filling placement

Source: Dr. Fernando Feitosa, Americana / Brazil

Liner

Bonding

Restoratives (ORMOCER®s)

Restoratives (Composites)

Restoratives (Compomers)

Restoratives (Glass ionomer materials)

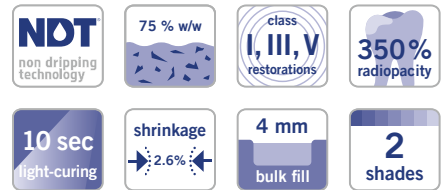
x-tra base®

Flowable light-curing base composite



Indications

- Base in class I and II cavities
- Cavity lining under direct restorative materials in class I and II cavities
- Small, non occlusal stress-bearing class I restorations according to minimally invasive filling therapy
- Class III and V restorations
- Extended fissure sealing
- Undercut block out
- Repair of small enamel defects
- Repair of small defects in aesthetic indirect restorations
- Repair of temporary C&B-materials
- Core build-up



REF 1790	Syringe 2 × 2 g universal, accessories
REF 1791	Syringe 2 × 2 g A2, accessories
REF 1794	Caps 16 × 0.25 g universal
REF 1795	Caps 16 × 0.25 g A2
REF 9301	Dispenser – Caps
REF 2148	Application cannulae type 46, 100 pcs.

Advantages

- 4 mm restoration base in one simple step
- Cures reliably in only 10 seconds (shade universal)
- Perfect surface affinity for outstanding adaption
- Low shrinkage stress
- High level of radiopacity (350 %Al)
- Self-levelling
- Can be combined with any methacrylate-based bonding or composite
- The non-dripping NDT®-syringe or convenient Flow-Caps with bendable metal cannulae ensure a reliable, precisely accurate application

Application



A fully prepared cavity



Coating of the cavity walls with Futurabond DC



Start at the deepest point in the cavity ...



... and fill up to 4 mm with x-tra base



Apply a 2 mm occlusal layer of GrandioSO



Finished restoration

Liner

Bonding

Restoratives (ORMOCER®s)

Restoratives (Composites)

Restoratives (Compomers)

Restoratives (Glass ionomer materials)

x-tra fil®

Light-curing posterior filling material



Indications

Class I and II posterior fillings
Core build-up

Advantages

- Curing depth 4 mm
- Curing time only 10 s
- Universal shade
- Long-lasting and economic
- Reduced working time, especially in combination with any Futurabond *SingleDose* adhesive
- Easy handling
- Excellent physical properties



86 % w/w	class I-II restorations	330% radiopacity	10 sec light-curing
shrinkage 1.7%	4 mm bulk fill		

REF 1739	Syringe 10 × 5 g
REF 1740	Syringe 5 g
REF 1741	Caps 20 × 0.25 g
REF 9301	Dispenser – Caps

Clinical Case



Tooth 26 with an amalgam restoration in need of replacement



The glistening surface indicates excellent wetting with the bond before polymerisation



Modeling the marginal ridge against the matrix



Filling the cavity in 4 mm increments



Filling the palatal cavity



Finished treatment with x-tra fil

Source: Prof. Jürgen Manhart, Munich / Germany

Liner

Bonding

Restoratives (ORMOCER®s)

Restoratives (Composites)

Restoratives (Compomers)

Restoratives (Glass ionomer materials)

Arabesk

Light-curing micro-hybrid composite with VOCO Sintraglas® multifiller system

Indications

Class I to V fillings
 Reconstruction of traumatically affected anteriors
 Shape and shade corrections for improved aesthetic appearance
 Locking and splinting of loose teeth
 Extended fissure sealing for molars and premolars
 Veneer repairs
 Core build-up under crowns
 Especially suitable for composite inlays

Advantages

- High abrasion resistance and stability
- Good packability and shaping
- Good aesthetics and shade adaptation to the tooth
- Excellent polishability
- Universal for all cavity classes



REF 1338 Set syringe 7 × 4 g (A1, A2, A3, A3.5, B2, B3, incisal), Vococid gel syringe 5 ml, Solobond M bottle 4 ml, shade guide, accessories

REF 2105 Shade guide

Shade	Syringe 4 g	Shade	Syringe 4 g
A1	REF 1339	B2	REF 1343
A2	REF 1340	B3	REF 1344
A3	REF 1341	Incisal	REF 1346
A3.5	REF 1342		

Arabesk Flow

Flowable light-curing glass-ceramic micro-hybrid resin-based dental restorative material

Indications

Filling of small cavities
 Extended fissure sealing
 Filling of cavities class III to V
 Lining, coating of cavities
 Repairing composite fillings and veneers
 Luting of full ceramic restorative pieces

Advantages

- Fine-flowing with excellent wetting capability
- Very good aesthetics (chameleon effect)
- Thixotropic properties
- High adhesion with Solobond M
- Precise application
- Economical



REF 9301 Dispenser – Caps

REF 2144 Application cannulae type 44, 100 pcs.

Shade	Syringe 3 g	Caps 25 × 0.25 g
A2	REF 1563	REF 1560
A3	REF 1564	REF 1561
A3.5	REF 1565	REF 1562

Alfacomp LC

Light-curing build-up and restorative material for the posterior tooth area

Indications

Class I and II restorative treatment in the posterior region
 Core build-up

Advantages

- Visible differentiation between restorations and tooth hard substance through grey colouring
- Simple application yet excellent physical properties
- High level of radiopacity
- Can be used with any light-curing dentine / enamel bonding agent



REF 1058 Syringe 4 g

REF 1059 Caps 16 × 0.25 g

Not available in Canada

Polofil® Supra

Light-curing micro-hybrid restorative material

Indications

For cavities classes I to V
 Reconstruction of traumatically affected anteriors
 Veneering of discoloured anteriors
 Splinting, locking of teeth

Advantages

- Combines the advantages of micro-filled and macro-filled composites
- Non-sticky, good packability
- Abrasion-proof and stable shades
- Low shrinkage
- Durable and resistant restorations
- Low water uptake



REF 1360	Set syringe 7 × 4 g (A1, A2, A3, A3.5, B2, B3, incisal), Vococid gel syringe 5 ml, Solobond M bottle 4 ml, accessories		
REF 1373	Set syringe 3 × 4 g (A2, A3, A3.5), Vococid bottle 3 ml, Solobond M bottle 4 ml, accessories		
REF 2107	Shade guide		
Shade	Syringe 4 g	Shade	Syringe 4 g
A1	REF 1361	B2	REF 1365
A2	REF 1362	B3	REF 1366
A3	REF 1363	Incisal	REF 1368
A3.5	REF 1364		

Twinky Star® · Twinky Star® Flow

Coloured light-curing compomer restorative material with glitter effect



Indications

Fillings in deciduous teeth

Advantages

- Eight attractive colours with glitter effect
- Easy and quick application from Caps
- Outstanding polishability
- Based on the proven VOCO compomer technology
- Shade guide with original material
- Parents can more easily motivate children to see the dentist
- Children overcome their anxiety
- Target group marketing tools available



Coloured Twinky Star fillings in deciduous teeth



REF 1680	Set Caps 40 × 0.25 g (5 of each shade), shade guide		
REF 1689	Shade guide		
REF 9301	Dispenser – Caps		
REF 2144	Application cannulae type 44, 100 pcs.		
Shade	Caps 25 × 0.25 g		
Gold	REF 1681		
Silver	REF 1682		
Blue	REF 1683		
Pink	REF 1684		
Green	REF 1685		
Orange	REF 1686		
Lemon	REF 1687		
Berry	REF 1688		
Twinky Star® Flow			
Shade	Syringe 2 g		
Blue	REF 1693		
Pink	REF 1694		

REF 1693 and 1694 are not available in Canada

Liner

Bonding

Restoratives (ORMOCER®s)

Restoratives (Composites)

Restoratives (Compomers)

Restoratives (Glass ionomer materials)

Restoratives (Glass ionomer materials)

Page			class I	class II	class III	class V / cervical defects	base / liner / core build-ups	extended fissure sealing	restorations of deciduous teeth	temporary treatment	working time [min.]	setting time [min.]
Glass ionomer restorative materials												
44	IonoStar Plus capsule	Fast-setting glass ionomer restorative material	• ^{1,2}	• ²	•	•	•	•	•	•	1	2
44	IonoStar Molar capsule	glass ionomer restorative material	• ^{1,2}	• ²	•	•	•		•	•	1.5	3 - 4
45	VOCO Ionofil Molar AC Quick capsule	Fast-setting glass ionomer restorative material	• ²	• ^{1,2}		•	•		•	•	1.5	2.5
45	VOCO Ionofil Molar handmix	glass ionomer restorative material	• ²	• ^{1,2}		•	•		•	•	2 - 3	4 - 5
Light-curing glass ionomer restorative materials												
19	Ionosel syringe, tube	glass ionomer composite cement					•	•				light-curing: 20 s / 1 mm
43	Ionolux capsule	glass ionomer restorative material	• ³		•	•	•		•	•	> 2.5	light-curing: 20 s / 2 mm
43	Ionolux handmix	glass ionomer restorative material	• ³		•	•	•		•	•	> 3	light-curing: 20 s / 2 mm

¹ non occlusion-bearing

² semi-permanent

³ small fillings

An overview of our composite restorative materials can be found on page 24.

Ionolux®

Light-curing glass ionomer restorative material



Indications

- Class III and V restorations, primarily cervical fillings and root caries
- Restoration of deciduous teeth
- Small class I fillings
- Temporary fillings
- Core build-up
- Linings

Advantages

- Excellent working time – setting time individually adjustable by light-curing
- No need for conditioning of dental hard tissue
- Also suitable for big cavities
- Immediately packable after placement in the cavity
- Does not stick to the instrument, easy to model
- Fill, polymerise and finish – no varnish required
- Fluoride release
- Biocompatible
- Radiopaque
- A suitable alternative to the CBF technique (composite bonded to flow) in deep cavities

Clinical Cases

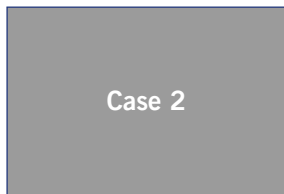


Tooth 35 with cervical defect



Tooth 35 immediately after treatment

Source: Dr. Isma Goltz, Bremen / Germany



Teeth 16, 15 after excavation



Subsequent treatment with Ionolux

Source: Prof. Hervé Tassery, PU-PH, Marseille / France



REF 2115	Set application capsule 50 pcs. (10 × A1, 10 × A2, 30 × A3)
REF 2117	Application capsule 20 pcs. A1
REF 2118	Application capsule 20 pcs. A2
REF 2119	Application capsule 20 pcs. A3
REF 2120	Application capsule 20 pcs. A3.5
REF 2121	Application capsule 20 pcs. B1
REF 2122	Application capsule 150 pcs. A2
REF 2123	Application capsule 150 pcs. A3
REF 1990	Powder / liquid (12 g / 5 ml) A1, accessories
REF 1991	Powder / liquid (12 g / 5 ml) A2, accessories
REF 1992	Powder / liquid (12 g / 5 ml) A3, accessories
REF 2331	Applicator – AC type 1
REF 2303	Mixing pads 70 × 80 mm, with adhesive back, 4 pcs.
REF 2169	VOCO Trifill instrument, 10 pcs.

Liner

Bonding

Restoratives (ORMOCER®s)

Restoratives (Composites)

Restoratives (Compomers)

Restoratives (Glass ionomer materials)

IonoStar® Plus

Fast-setting glass ionomer restorative material



Indications

Restorations of non occlusion-bearing class I cavities
Semi-permanent restorations of class I and II cavities
Restorations of cervical lesions, class V cavities, root caries
Restorations of class III cavities
Restoration of deciduous teeth
Base / liner
Core build-up
Temporary restorations
Extended fissure sealing

Advantages

- Perfect marginal adaptation and packability in one product, thanks to a change in viscosity during application
- Fast setting time of only 2 minutes from placement of the filling
- The first glass ionomer material with tooth-like fluorescence
- High level of fluoride release
- The new capsule design reaches smaller cavities and difficult-to access areas of the mouth
- High compressive strength and abrasion resistance



REF 2540	Set application capsule 50 pcs. (10 × A2, 30 × A3, 10 × A3.5)
REF 2548	Application capsule 20 pcs. A1
REF 2543	Application capsule 20 pcs. A2
REF 2544	Application capsule 20 pcs. A3
REF 2545	Application capsule 20 pcs. A3.5
REF 2546	Application capsule 150 pcs. A2
REF 2547	Application capsule 150 pcs. A3
REF 2331	Applicator – AC type 1
REF 2169	VOCO Trifill instrument, 10 pcs.

IonoStar® Molar

Glass ionomer restorative material

Indications

Restorations of non occlusion-bearing class I cavities
Semi-permanent restorations of class I and II cavities
Restorations of cervical lesions, class V cavities, root caries
Restorations of class III cavities
Restoration of deciduous teeth
Base / liner
Core build-up
Temporary restorations

Advantages

- Variable mixing time for adjustment of consistency
- Perfect marginal adaptation and easy application
- Can be modelled immediately after insertion without sticking to the instrument
- In VOCO's new application capsule, easy activation without activator
- The new capsule design reaches smaller cavities and difficult-to-access areas in the mouth
- High compressive strength and abrasion resistance



REF 2520	Set application capsule 50 pcs. (10 × A1, 10 × A2, 30 × A3)
REF 2522	Set application capsule 150 pcs. A2, AC Applicator type 1
REF 2523	Set application capsule 150 pcs. A3, AC Applicator type 1
REF 2524	Application capsule 20 pcs. A1
REF 2525	Application capsule 20 pcs. A2
REF 2526	Application capsule 20 pcs. A3
REF 2532	Application capsule 150 pcs. A2
REF 2533	Application capsule 150 pcs. A3
REF 2331	Applicator – AC type 1
REF 2169	VOCO Trifill instrument, 10 pcs.

VOCO Ionofil® Molar AC Quick

Fast-setting glass ionomer restorative material

Indications

- Restorations of class II cavities (not occlusion-bearing)
- Temporary long-term treatment of class I and II cavities
- Build-up fillings and linings
- Core build-up
- Restoration of deciduous teeth
- Restoration of V-shaped defects and cervical enamel or root erosions including class V cavities

Advantages

- Very good packability
- Non-sticky consistency
- Very high abrasion resistance, compressive and transverse strength
- Stable fillings without marginal gaps
- Continuous high fluoride release
- Biocompatible
- Tooth-like aesthetic translucency
- A setting time of only 2.5 minutes makes VOCO Ionofil Molar AC Quick the perfect material for the treatment of children and impatient patients
- Good aesthetics in three shades



REF 1630	Set application capsule 48 pcs. (8 × A1, 8 × A2, 32 × A3), Final Varnish LC bottle 3 ml
REF 1631	Application capsule 48 pcs. A1
REF 1634	Application capsule 48 pcs. A2
REF 1632	Application capsule 48 pcs. A3
REF 1241	Final Varnish LC bottle 2 × 3 ml
REF 2331	Applicator – AC type 1
REF 9300	Activator – AC
REF 2169	VOCO Trifill instrument, 10 pcs.

VOCO Ionofil® Molar

Glass ionomer restorative material

Indications

- Restorations of class II cavities (not occlusion-bearing)
- Temporary long-term treatment of class I and II cavities
- Build-up fillings and linings
- Core build-up
- Restoration of deciduous teeth
- Restoration of V-shaped defects and cervical enamel or root erosions including class V cavities

Advantages

- Very good packability
- Non-sticky consistency
- Very high abrasion resistance, compressive and transverse strength
- Good adhesion to dentine and enamel
- Very durable fillings
- Continuous high fluoride release
- Radiopaque
- Biocompatible
- Tooth-like aesthetic translucency



REF 1447	Powder 15 g A1
REF 1442	Powder 15 g A2
REF 1443	Powder 15 g A3
REF 1448	Liquid 10 ml
REF 2168	VOCO mixing spatula for cements, 20 pcs.
REF 2169	VOCO Trifill instrument, 10 pcs.

Liner

Bonding

Restoratives (ORMOCER®s)

Restoratives (Composites)

Restoratives (Compomers)

Restoratives (Glass ionomer materials)

Easy Glaze®

Nano-filled light-curing coating for surface sealing



REF 1016	Bottle 5 ml, accessories
REF 2245	Easy Brush, application brushes, 50 pcs.
REF 2315	Mixing palettes, 20 pcs.

Indications

Surface sealing of provisional crowns and bridges, glass ionomer restorations and definitive composite restorations

Protecting glass ionomer surfaces against the effects of moisture and dehydration immediately after placement

Sealing glass ionomer liners / build-up restorations before taking impressions

Sealing and protecting the adhesive interfaces between restoration and tooth structure

Advantages

- Glossy and aesthetic surfaces
- Easy to use
- Provides protection against discolouration

In combination with VOCO Ionofil® Molar and IonoStar®

- Protects against moisture and dehydration immediately after filling placement
- Tooth-like fluorescence
- Natural gloss

Liner

Bonding

Restoratives (ORMOCER®s)

Restoratives (Composites)

Restoratives (Compomers)

Restoratives
(Glass ionomer materials)



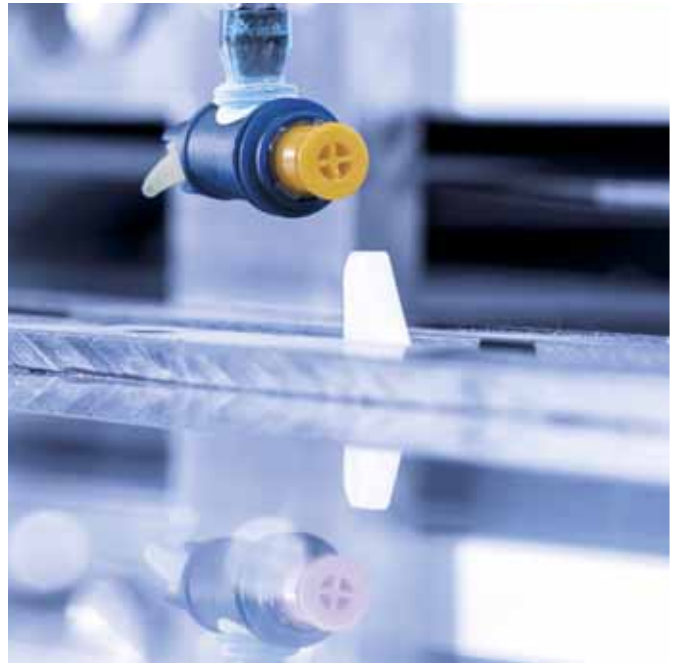
Indirect Restoration

Reliability. Practicality. Method.

Naturally, our portfolio offers you the full spectrum of indirect restoration materials: resin-reinforced glass ionomer cements, composite-based luting systems, highly aesthetic material for the fabrication of provisional crowns and bridges, glass fibre-reinforced composite posts and material for repairing ceramic restorations.

CAD / CAM users wishing to create crowns and bridges chairside will also find the ideal material basis in VOCO's composite blocks and discs.

For 3D printing work we recommend our perfectly coordinated materials for additive printing of objects.



Grandio® blocs · Grandio® disc

Nano-ceramic hybrid CAD / CAM material



Indications

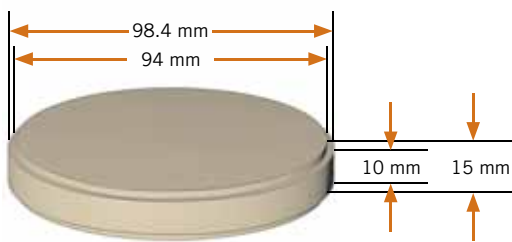
Crowns, inlays, onlays, veneers

Implant supported crowns

Advantages

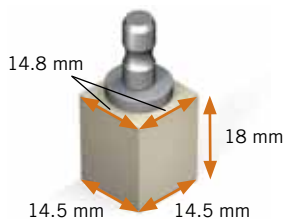
- Highest filler content (86 % w/w)
- Resembles natural teeth perfectly
- Excellent physical values for flexural strength and abrasion
- No firing required
- Can be processed using any conventional milling unit
- Can be polished and repaired optimally
- Ideal for milling even in cases with thin edges
- Based on the nano-hybrid technology

Size disc

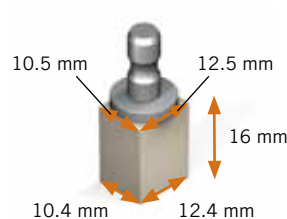


Sizes blocs

No. 14L



No. 12



Grandio® blocs

REF 6000 Set blocks
2 × No. 12 (A2 LT, A3 HT),
3 × No. 14L (A3 LT, A3 HT,
A3.5 LT), Bifix QM QuickMix
syringe 10 g universal,
Futurabond U *SingleDose* 5 pcs.,
Ceramic Bond bottle 5 ml,
Dimanto set, accessories

Low translucent (LT)

	5 × No. 12	5 × No. 14L
A1 LT	REF 6003	REF 6018
A2 LT	REF 6004	REF 6019
A3 LT	REF 6005	REF 6020
A3.5 LT	REF 6006	REF 6021
B1 LT	REF 6007	REF 6022
C2 LT	REF 6008	REF 6023
BL LT	REF 6009	REF 6024

High translucent (HT)

	5 × No. 12	5 × No. 14L
A1 HT	REF 6012	REF 6027
A2 HT	REF 6013	REF 6028
A3 HT	REF 6014	REF 6029
A3.5 HT	REF 6015	REF 6030

Shade	5 × No. 12	5 × No. 14L
Mixed*	REF 6033	REF 6034

*(1 each of A1 LT, B1 LT, C2 LT, BL LT, A1 HT)

Grandio® disc

Low translucent (LT)

1 × 15 mm, ø 98.4 mm

A1 LT	REF 6050
A2 LT	REF 6051
A3 LT	REF 6052
A3.5 LT	REF 6053
B1 LT	REF 6054
C2 LT	REF 6055
BL LT	REF 6056

High translucent (HT)

1 × 15 mm, ø 98.4 mm

A1 HT	REF 6057
A2 HT	REF 6058
A3 HT	REF 6059
A3.5 HT	REF 6060

Grandio disc is not available in Canada

V-Print splint

Material for 3D printing

Indications

Therapeutic splints
Auxiliary parts and functional parts for diagnostics
Bleaching splints (home bleaching)

Advantages

- Medical device, class IIa
- Biocompatibility and neutral flavour ensure high level of patient acceptance
- 385 nm wavelength allows aesthetically pleasing clear-transparent print
- High flexural strength for durable objects
- High degree of precision and thus accurate fit for highly comfortable wear



REF 6044 Bottle 1000 g clear
Not available in Canada

V-Print SG

Material for 3D printing

Indications

Dental drilling templates

Advantages

- Medical device, class IIa
- Biocompatibility and neutral flavour ensure high level of patient acceptance
- 385 nm wavelength allows aesthetically pleasing clear-transparent print
- Dimensional stability and autoclavability for a high level of patient safety



REF 6043 Bottle 1000 g clear
Not available in Canada

Medical device class IIa –
approved for wound
contact

V-Print model

Material for 3D printing

Indications

Dental working and presentation models

Advantages

- Workpieces can be ground precisely, without undesirable changes (e.g. as caused by heat influx)
- Non-scratch, very hard surface allows trial fitting without deformation
- Suitable for deep-drawing processes – no deformation caused by heat influx from deep-drawing temperature
- High degree of precision for optimally fitting restorations



REF 6042 Bottle 1000 g beige
Not available in Canada

Luting

Page		Type	presentation	Inlays / onlays			crowns			bridges			Maryland bridges			veneers	posts			attachments ⁴	orthodontic bands	steel crowns				
				ceramic ²	composite	metal	ceramic ²	composite	metal	ceramic ²	composite	metal	ceramic ²	composite	metal	ceramic ²	ceramic ²	metal	carbon fibre	glass fibre	quartz fibre					
Luting material																										
51	Bifix SE	composite	QuickMix syringe	•	•	•	•	•	•	•	•	•	•	•	•	•	•	•	•	•	•				•	
52	Bifix QM	composite	QuickMix syringe	•	•	•	•	•	•	•	•	•	•	•	•	•	•	•	•	•	•	•				•
53	Merlon Plus	resin reinforced GIC ¹	handmix / capsule	•	•	•	•	•	•	•	•	•	•	•	•	•	•	•	•	•	•	•				•
53	Merlon Plus QM	resin reinforced GIC ¹	QuickMix syringe	•	•	•	•	•	•	•	•	•	•	•	•	•	•	•	•	•	•	•				•
54	Merlon	GIC ¹	capsule	•	•	•	• ³	•	•	•	•	•	•	•	•	•	•	•	•	•	•				•	
54	Merlon	GIC ¹	handmix	•	•	•	•	•	•	•	•	•	•	•	•	•	•	•	•	•	•				•	
54	Aqua Merlon	GIC ¹	handmix	•	•	•	•	•	•	•	•	•	•	•	•	•	•	•	•	•	•				•	
55	Quick Up	composite	QuickMix syringe																			•				
59	Rebilda DC	composite	QuickMix / cartridge																							
60	Grandio Core Dual Cure	composite	QuickMix syringe																							

¹ glass ionomer luting cement
² silicate / zirconium dioxide / aluminium oxide ceramics
³ also on implant abutments
⁴ ball, Locator®, telescope retention elements, as well as other holding elements

Bifix® SE

Dual-curing self-adhesive composite-based luting system



Indications

Definitive luting of inlays, onlays, crowns and bridges (not Maryland bridges) made from ceramic, zirconium dioxide, composites and metal

Definitive luting of metal, ceramic, zirconium dioxide and fibre-reinforced posts

Advantages

- Secure adhesion to tooth and restoration
- Fast working: no etching, no bonding
- Odourless
- Easy handling
- Long-term durability
- Simple removal of excess material
- Minimal film thickness of 10 µm for precisely fitted luting without elevating the bite
- Also suitable for zirconium dioxide
- Endo-mixing tips in each package – for the most precise application even in the root canal

Application



1 - 2 sec.



180 - 240 sec.



Easy excess removal during gel-phase. Tack-cure Bifix SE using the curing light for 1 - 2 seconds per surface. The excess gel-like material is easily removeable, e.g. with a scaler.



self-etch H+ H+	20 sec light-curing	DC dual-curing	no conditioning
auto mix	3 shades		

REF 1784	Set QuickMix syringe 3 × 5 g (universal, transparent, white-opaque), accessories
REF 1785	QuickMix syringe 5 g universal, accessories
REF 1786	QuickMix syringe 5 g transparent, accessories
REF 1787	QuickMix syringe 5 g white-opaque, accessories
REF 2194	Mixing tips type 14, 50 pcs.
REF 2195	Mixing tips type 15 (with intraoral tips type 1), 50 pcs.

CAD / CAM material

Luting

Core build-up

Temporaries

Denture relining

Impression

Repair

Bifix® QM

Dual-curing universal composite-based luting system



Also for
zirconium dioxide
luting



20 sec
light-curing

DC
dual-curing

auto
mix

3
shades

Indications

Adhesive luting of inlays, onlays, veneers, crowns, partial crowns, bridges, root posts and adhesive bridges (Maryland bridges)

Advantages

- For all materials (metal, composite inlays and ceramic, also zirconium dioxide)
- Bubble-free perfect mixing
- Direct application
- Excellent adhesion to dentine, enamel and to metals
- Special one-step Ceramic Bond for optimal adhesion to porcelain
- Radiopaque
- Available in three shades
- Available as an all-in-one set

REF 1217	Set QuickMix syringe 10 g U (universal), Futurabond DC bottle 4 ml each of liquid 1 and 2, Ceramic Bond bottle 5 ml, accessories
REF 1218	QuickMix syringe 10 g universal, accessories
REF 1219	QuickMix syringe 10 g transparent, accessories
REF 1759	QuickMix syringe 10 g white-opaque, accessories
REF 2261	Dispenser – QuickMix
REF 2191	Mixing tips type 11, 50 pcs.
REF 2139	Intraoral tips type 1, 50 pcs., to be used in the root canal
REF 2142	Intraoral tips type 4, 50 pcs.

Ceramic Bond

Coupling agent for porcelain (incl. zirconium dioxide) and composite

Also for
zirconium dioxide
luting



ceramic

composite

Indications

Ceramic Bond is used as a coupling agent to achieve an optimal bond strength between indirect restorations made of either silicate ceramics, aluminium oxide, zirconium dioxide or composite, as well as glass fibre-reinforced composite posts, on the one side and methacrylate-based luting composites on the other side.

Advantages

- Creates ideal conditions for a durable bond between indirect restoration and luting composite
- No mixing required

Advantages of the *SingleDose*

- Easy, quick and hygienic
- No additional devices required
- No spilling in any position

REF 1106	Bottle 5 ml
REF 1107	<i>SingleDose</i> 50 pcs., accessories

Merlon Plus

Resin reinforced glass ionomer luting cement

Indications

Luting of

- porcelain-fused-to-metal crowns, bridges on hard dental tissue and on cores rebuilt with amalgam, composites or glass ionomer materials
- metal inlays, onlays, crowns and bridges
- root posts
- all-ceramic crowns manufactured from silicate ceramic, zirconium dioxide-only or alumina-only ceramic cores
- orthodontic appliances

Advantages

- High adhesion values compared with conventional glass ionomer luting cements
- Precise marginal fit
- Thixotropic: Very good wetting behaviour without unwanted run-off
- Low film thickness
- Moisture and acid resistant
- Simple removal of excess material thanks to long elastic phase
- Self-adhesive: secure and quick bonding
- Also suitable for high-strength zirconium dioxide ceramics



REF 1731	Powder 15 g
REF 1732	Liquid 10 ml
REF 1736	Application capsule 50 pcs.
REF 1737	Application capsule 150 pcs.
REF 2331	Applicator – AC type 1

Merlon Plus QM

Resin reinforced glass ionomer luting cement

Indications

Luting of

- metal-based inlays, onlays, crowns and bridges
- high-strength (e.g., zirconium dioxide-based or lithium disilicates, etc.) all-ceramic inlays, onlays, crowns and bridges
- metal, ceramic and glass fibre-reinforced posts
- orthodontic bands and aids

Advantages

- Excellent adhesion to the dental structure
- Precise marginal fit
- Moisture and acid resistant
- Self-adhesive: secure and quick bonding without primer or conditioner
- Excess material can be removed without waiting thanks to optional short-time light polymerisation
- QuickMix syringe ensures optimal application and a reliable mixing ratio



REF 1727	QuickMix syringe 8.5 g, accessories
REF 1728	QuickMix syringe 3 × 8.5 g, accessories
REF 2261	Dispenser – QuickMix
REF 2189	Mixing tips type 10, 50 pcs.

Not available in Canada

Meron (Application capsule)

Radiopaque glass ionomer luting cement



REF 1242	Application capsule 50 pcs.
REF 1243	Application capsule 150 pcs.
REF 2331	Applicator – AC type 1

Indications

Luting of

- metal-based crowns, bridges, inlays and onlays
- high-strength all-ceramic crowns and bridges
- metal-based and high-strength all-ceramic crowns and bridges on implant abutments
- metal root posts or indirect metal post core build-ups
- prefabricated steel crowns
- orthodontic bands

Advantages

- Sizeable amount available per capsule – also suitable for large restorations
- Very good wetting behaviour
- Stable
- Low film thickness
- High level of translucency for aesthetic results
- Simple removal of excess material
- Continuous release of fluoride
- No known postoperative sensitivities

Meron

Glass ionomer luting cement

Indications

Luting of crowns, bridges, inlays, onlays, pins, posts and orthodontic bands

Advantages

- Low solubility in the mouth
- Low acidity
- Biocompatible
- Easy application



REF 1086	Set powder / liquid (35 g / 15 ml)
REF 1090	Set mini powder / liquid (15 g / 7 ml)

Aqua Meron

Water-mixable glass ionomer luting cement

Indications

Luting of crowns, bridges, inlays, onlays, pins, posts and orthodontic bands

Advantages

- Good flowability
- Low solubility in the mouth
- Low acid stress
- Biocompatible



REF 1172	Powder 35 g with dropping bottle
----------	----------------------------------

Quick Up®

Self-curing luting material for attachments and secondary denture parts



Indications

Gingiva-coloured composite for luting attachments, such as ball, Locator® and telescope retention elements in prostheses with plastic bases

Reluting secondary elements in prostheses with plastic bases, e.g. connecting bars

Advantages

- Very simple chairside use
- High strength values
- Complete set for immediate use, including checking and block out material for primary structures that require protection, e.g. implants
- Ideal combination of self-curing luting material and light-curing correction material

Locator® is not a registered trademark of VOCO GmbH.

Application



Implant with fitted attachments



Prosthetic base with the recesses for the attachments already created



Checking the accuracy of the fit with Fit Test C & B



Checking of attachments for fitting accuracy with Fit Test C & B



Blocking out, covering of primary parts / gingiva with Fit Test C & B



Applying Quick Up from the QuickMix syringe



Applying Quick Up LC to correct deficits and superficial defects



Luted attachment in the prosthesis



REF 1625	Set QuickMix syringe 7.5 g, Quick Up LC syringe 2 g, adhesive bottle 4 ml, Fit Test C & B QuickMix syringe 5 ml, accessories
REF 1626	QuickMix syringe 7.5 g, accessories
REF 1627	Quick Up LC syringe 2 g, accessories
REF 1628	Adhesive bottle 4 ml, accessories
REF 2261	Dispenser – QuickMix
REF 2189	Mixing tips type 10, 50 pcs.
REF 2144	Application cannulae type 44, 100 pcs.
REF 2247	Single Tim, application brushes, 100 pcs.
REF 2315	Mixing palettes, 20 pcs.

BrackFix®

Light-curing bracket bonding system

Fluorescent



20 sec
light-curing

Indications

Direct bonding of orthodontic metal and ceramic brackets

Advantages

- Optimal consistency of the adhesive: stable positioning of the bracket on the surface of the tooth
- Provides secure adhesion for metal and ceramic brackets
- Light-curing: long working time
- Can be exposed to loads immediately after polymerisation
- Fluorescent: allows for quick and gentle elimination of adhesive residues after bracket removal

REF 1205	Set adhesive syringe 2 × 4 g, Primer bottle 6 ml, accessories
REF 1206	Set SE adhesive syringe 2 × 4 g, Primer SE <i>SingleDose</i> 40 pcs., accessories
REF 1207	Adhesive syringe 2 × 4 g
REF 1208	Primer bottle 6 ml
REF 1209	Primer SE <i>SingleDose</i> 50 pcs., accessories
REF 2247	Single Tim, application brushes, 100 pcs.
REF 2315	Mixing palettes, 20 pcs.

Clinical case



Etching of enamel surface



Application of BrackFix Primer



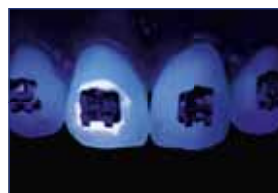
Simple application of BrackFix Adhesive to bracket



Simple and secure positioning on the tooth



Tooth 11 (upper right central incisor) prior to polymerisation and removal of excess adhesive



Under UVA light (for demonstration purposes)



Illumination with UVA light following removal of brackets



Controlled removal of BrackFix residues



Final check with UVA light: No adhesive residues remain

Source: Dr. Felipe Moura / Brazil

CAD / CAM material

Luting

Core build-up

Temporaries

Denture relining

Impression

Repair

Rebilda® Post

Glass fibre-reinforced composite post

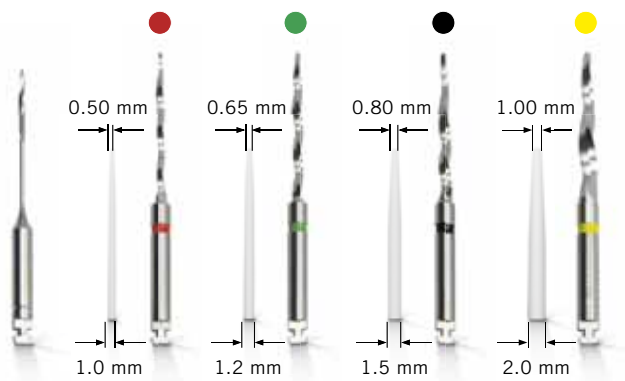


Indications

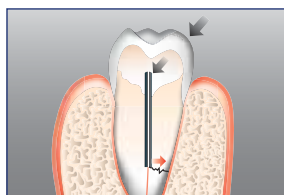
Endodontic post build-up for support and anchoring of coronal restoration in situations with insufficient tooth substance

Advantages

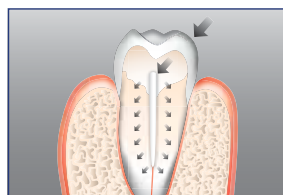
- Dentine-like elasticity behaviour, high transverse strength
- High level of radiopacity (350 %Al)
- Anatomical shape
- Adhesive luting
- Removable
- All materials in the set match each other
- Post insertion and core-build-up in one step
- **Futurabond® DC · Futurabond® U**
 - safe self-cure
 - high adhesion without additional etching
- **Rebilda® DC**
 - suitable for post luting
 - cuts like dentine, very good physical properties
 - low setting temperature



Posts illustrations are not the actual size.



Metal post – root fractures



Rebilda Post – dentine-like E-modulus

REF 1770	Set 5 posts each of (ø 1.2 mm, ø 1.5 mm, ø 2.0 mm), 1 drill each of (ø 1.2 mm, ø 1.5 mm, ø 2.0 mm)
REF 1771	Set 5 posts each of (ø 1.2 mm, ø 1.5 mm, ø 2.0 mm), 1 drill each of (ø 1.2 mm, ø 1.5 mm, ø 2.0 mm), 1 reamer (ø 0.7 mm), Ceramic Bond bottle 5 ml, Futurabond DC <i>SingleDose</i> 15 pcs., Rebilda DC QuickMix syringe 10 g dentine, accessories
REF 1782	Set II 5 posts each of (ø 1.0 mm, ø 1.2 mm, ø 1.5 mm, ø 2.0 mm), 1 drill each of (ø 1.0 mm, ø 1.2 mm, ø 1.5 mm, ø 2.0 mm), 2 reamer (ø 0.7 mm), Ceramic Bond bottle 5 ml, Futurabond U <i>SingleDose</i> 20 pcs., Rebilda DC QuickMix syringe 10 g dentine, accessories
REF 1775	Post 10 (ø 1.0 mm), 5 pcs.
REF 1772	Post 12 (ø 1.2 mm), 5 pcs.
REF 1773	Post 15 (ø 1.5 mm), 5 pcs.
REF 1774	Post 20 (ø 2.0 mm), 5 pcs.
REF 1780	Drill 10 (ø 1.0 mm), 1 pcs.
REF 1777	Drill 12 (ø 1.2 mm), 1 pcs.
REF 1778	Drill 15 (ø 1.5 mm), 1 pcs.
REF 1779	Drill 20 (ø 2.0 mm), 1 pcs.
REF 1769	Reamer (ø 0.7 mm), 3 pcs.

CAD / CAM material

Luting

Core build-up

Temporaries

Denture relining

Impression

Repair

Rebilda® Post GT

Bundled glass fibre-reinforced composite post



Indications

Core build-up restorations with root posts for endodontically treated teeth

Advantages

- Optimal restoration of mechanically prepared root canals
- Simple application
- Saves time and reduces the extent of tooth substance removal, as there is no need for preparation of the post site, which weakens the tooth less than conventional posts
- Optimal adaptation to all canal morphologies and geometries
- All materials in the set are perfectly coordinated
- **Futurabond® U**
 - safe self-cure
 - high adhesion without additional etching
- **Rebilda® DC**
 - suitable for post luting
 - cuts like dentine, very good physical properties
 - low setting temperature

REF 1972	Set 5 posts each of (~ ø 0.8 mm, ~ ø 1.0 mm, ~ ø 1.2 mm, ~ ø 1.4 mm), Ceramic Bond bottle 5 ml, Futurabond U SingleDose 20 pcs., Rebilda DC QuickMix syringe 10 g dentine, accessories
REF 1973	Post 4 (~ ø 0.8 mm), 5 pcs.
REF 1974	Post 6 (~ ø 1.0 mm), 5 pcs.
REF 1975	Post 9 (~ ø 1.2 mm), 5 pcs.
REF 1976	Post 12 (~ ø 1.4 mm), 5 pcs.

Application



CAD / CAM material

Luting

Core build-up

Temporaries

Denture relining

Impression

Repair

Rebilda® DC

Dual-curing flowable core build-up and post luting system



Indications

Adhesive core build-up on vital and non-vital teeth
Luting of fibre-reinforced resin posts

Advantages

- Light-curing for time-saving application
- Additional chemical curing for reliable processing
- Available in 10 g QuickMix syringes and 50 g cartridge
- In three shades: *blue* for easy identification of preparation margins, *dentine* for aesthetic reasons, *white* as an aesthetic contrast to dentine
- Optimised small mixing tips save material
- Low heat development even in bulk application
- Flowable – packing is obsolete
- Safe adhesion with system bond
- Easy access of posterior areas with intraoral tips

Clinical Case



Tooth 11 requiring therapy



Canal opening with root-canal filling



Root-canal filling with marginal integrity, up to the apex



Rebilda Post inserted into the root canal



Prepared build-up – ready for impression

Source: Dr. Walter Denner, Fulda / Germany



REF 1395	Set cartridge 50 g dentine, Futurabond DC bottle each of 4 ml liquid 1 and 2, dispenser type 3, accessories
REF 1396	Cartridge 50 g dentine, accessories
REF 1397	Cartridge 50 g blue, accessories
REF 1398	Cartridge 50 g white, accessories
REF 1402	Set QuickMix syringe 10 g dentine, Futurabond DC bottle each of 4 ml liquid 1 and 2, accessories
REF 1403	QuickMix syringe 10 g dentine, accessories
REF 1404	QuickMix syringe 10 g blue, accessories
REF 1405	QuickMix syringe 10 g white, accessories
REF 2259	Dispenser – type 3
REF 2261	Dispenser – QuickMix
REF 2191	Mixing tips type 11 for QuickMix syringe, 50 pcs.
REF 2139	Intraoral tips type 1 for QuickMix syringe, 50 pcs., to be used in the root canal
REF 2142	Intraoral tips type 4 for QuickMix syringe, 50 pcs.
REF 2192	Mixing tips type 12 for cartridge, 50 pcs.
REF 2141	Intraoral tips type 3 for cartridge, 50 pcs.
REF 2199	Mixing tips type 19 for cartridge, bendable, 30 pcs.

CAD / CAM material

Luting

Core build-up

Temporaries

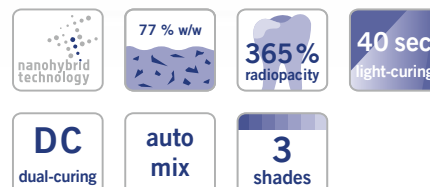
Denture relining

Impression

Repair

Grandio® Core Dual Cure

Flowable dual-curing nano-hybrid core build-up material



Indications

Core build-up, for vital as well as non-vital teeth
Luting of root posts

Advantages

- Outstanding physical properties for durable core build-ups
- Filler content of 77 % w/w
- Nano-hybrid technology
- In three shades: dentine, blue and white
- QuickMix syringe to ensure optimal application and consistent mixing ratio
- Flowable
- With intraoral tips type 4 for convenient application

REF 1910	QuickMix syringe 10 g dentine, accessories
REF 1911	QuickMix syringe 10 g blue, accessories
REF 1912	QuickMix syringe 10 g white, accessories
REF 2261	Dispenser – QuickMix
REF 2191	Mixing tips type 11 for QuickMix syringe, 50 pcs.
REF 2142	Intraoral tips type 4 for QuickMix syringe, 50 pcs.

Clinical Case



High loss of substance in the anterior area after excavation



Condition after build-up with Grandio Core Dual Cure, ready for impression



Final restoration

Source: Dr. Walter Denner, Fulda / Germany

Structur 3

Self-curing composite material for the fabrication of provisional crowns and bridges

GLOSS WITHOUT POLISHING!

Indications

Fabrication of temporary crowns, bridges, inlays, onlays, partial crowns, veneers and temporary posts

Fabrication of long-term temporaries

Lining of pre-fabricated temporary crowns made from composite materials, polycarbonate or metal

Advantages

- Processing**
 - quick, simple and reliable thanks to the 1:1 cartridge system
 - short setting time
 - elastic phase allows simple removal from the prepared tooth
 - gloss without polishing – only requires removal of the inhibition layer
- Aesthetics**
 - natural gloss and fluorescence
 - available in 8 shades
- Durability**
 - high compressive strength
 - excellent fracture resistance

Clinical Case



Initial situation



Prepared cores



Finished temporary bridge



Appealing result

Source: Dr. Walter Denner, Fulda / Germany



nanohybrid
technology

SC
self-curing

**auto
mix**

no
polishing

temporary

8
shades

REF 2500	Set cartridge 50 ml A2, dispenser type 2, accessories	
REF 2501	Set cartridge 50 ml A3, dispenser type 2, accessories	
REF 2158	Dispenser – type 2	
REF 2261	Dispenser – QuickMix	
REF 2185	Mixing tips type 6 for cartridge, 50 pcs.	
REF 2189	Mixing tips type 10 for QuickMix syringe, 50 pcs.	
	Cartridge 50 ml, mixing tips type 6	Cartridge 5 x 50 ml, mixing tips type 6
A1	REF 2503	–
A2	REF 2504	REF 2512
A3	REF 2505	REF 2513
A3.5	REF 2506	–
B1	REF 2507	–
B3	REF 2508	–
C2	REF 2509	–
BL	REF 2510	–
	QuickMix syringe 5 ml, mixing tips type 10	
A1	REF 2515	
A2	REF 2516	
A3	REF 2517	
B1	REF 2518	

CAD / CAM material

Luting

Core build-up

Temporaries

Denture relining

Impression

Repair

Structur 2

Self-curing composite material for the fabrication of provisional crowns and bridges



Indications

Fabrication of aesthetic temporary crowns, bridges, inlays and onlays

Advantages

- Simple and fast working steps
- Less than 1 minute setting time in the mouth
- Easy to shape and polish
- Available in 8 shades for natural aesthetics
- Long-lasting temporaries
- High stability of shape and shade
- Very economical due to minimal material loss
- Natural fluorescence



REF 1478	Set cartridge 75 g A3, dispenser type 2, accessories
REF 1499	Set cartridge 75 g A2, dispenser type 2, accessories
REF 2158	Dispenser – type 2
REF 2261	Dispenser – QuickMix
REF 2185	Mixing tips type 6 for cartridge, 50 pcs.
REF 2189	Mixing tips type 10 for QuickMix syringe, 50 pcs.

Shade	Cartridge 75 g, mixing tips type 6	Cartridge 5 × 75 g, mixing tips type 6
A1	REF 1479	–
A2	REF 1480	REF 1492
A3	REF 1481	REF 1491
A3.5	REF 1490	–
B1	REF 1482	–
B3	REF 1483	–
C2	REF 1486	–
BL	REF 1485	–

Shade	QuickMix syringe 8 g, mixing tips type 10
A1	REF 1309
A2	REF 1310
A3	REF 1311
B1	REF 1312

Temporary Set

Material for the fabrication of provisional dental prosthetic pieces, filling material for temporary restorations and temporary luting cement

Indications

More information on the indications can be found on the product pages of Structur 3, Provicol QM and Clip Flow

Advantages

- Provisional dental prosthetic pieces with a gloss that does not require polishing
- Light-curing temporary restoration material for inlay and onlay cavities, durable and saliva-proof
- Temporary, eugenol-free luting material with calcium hydroxide and bacteriostatic effect



REF 2502	Structur 3 cartridge 50 ml A3, Provicol QM QuickMix syringe 5 ml, Clip Flow syringe 2 × 1.8 g
----------	---

Not available in Canada

Structur Premium

Highly aesthetic composite material for the fabrication of provisional crowns and bridges



Indications

Fabrication of highly aesthetic crowns, bridges, inlays and onlays

Advantages

- Aesthetic like porcelain
- High stability of shape and shade
- Natural fluorescence
- Brilliant gloss
- As hard as enamel
- Extremely high fracture resistance
- Perfect handling
- Convenient work steps, easy to trim and polish
- Long-term use of temporary possible
- Very economical due to minimal material loss



SC self-curing auto mix temporary 7 shades

REF 2158	Dispenser – type 2
REF 2185	Mixing tips type 6 for cartridge, 50 pcs.
Cartridge 75 g, mixing tips type 6	
Shade	
A1	REF 1712
A2	REF 1713
A3	REF 1714
A3.5	REF 1717
B1	REF 1718
B3	REF 1715
BL	REF 1716

Bifix® Temp

Dual-curing, composite-based temporary luting material

Indications

Non-permanent luting of temporary restorations

Advantages

- Translucent, tooth-like shade for aesthetic restorations
- Dual-curing – flexible setting times by use of a polymerisation light
- Simple removal of excess material – can be removed in one piece following brief light-curing



DC dual-curing auto mix temporary

REF 1055	QuickMix syringe 5 ml universal, accessories
REF 2261	Dispenser – QuickMix
REF 2188	Mixing tips type 9, 50 pcs.

CAD / CAM material

Luting

Core build-up

Temporaries

Denture re-lining

Impression

Repair

Provicol® QM Plus

Eugenol-free temporary luting cement with calcium hydroxide



Indications

Temporary luting of inlays, onlays, crowns, partial crowns, bridges, attachments and posts

Temporary filling of small one-surface cavities

Advantages

- Increased strength for more retention and secure adhesion
- High level of radiopacity
- Semi-elastic properties for safe adhesion of the temporary
- Calcium hydroxide
 - supports the formation of tertiary dentine
 - bacteriostatic
- Eugenol-free, thus low allergy potential
- Ideal before adhesive luting with resin cements, because no inhibition of curing reaction of resin-based filling or luting materials

SC
self-curing

auto
mix

temporary

contains
Ca(OH)₂

REF 1098	QuickMix syringe 5 ml, accessories
REF 1099	Set QuickMix syringe 3 × 5 ml (2 × Provicol QM, 1 × Provicol QM Plus), accessories
REF 2261	Dispenser – QuickMix
REF 2189	Mixing tips type 10, 50 pcs.

Provicol® · Provicol® QM

Eugenol-free temporary luting cement with calcium hydroxide



Indications

Temporary luting of inlays, onlays, crowns, partial crowns, bridges, attachments and posts

Temporary filling of small one-surface cavities

Advantages

- Semi-elastic properties for safe adhesion of the temporary
- Calcium hydroxide
 - supports the formation of tertiary dentine
 - bacteriostatic
- Eugenol-free, thus low allergy potential
- Ideal before adhesive luting with resin cements, because no inhibition of curing reaction of resin-based filling or luting materials

SC
self-curing

auto
mix

temporary

contains
Ca(OH)₂

REF 1075	Tube 2 × 25 g (base / catalyst)
REF 1078	Tube 10 × 25 g (base / catalyst)
REF 1074	QuickMix syringe 5 ml, accessories

Clip Flow

Flowable, light-curing filling material for temporary restorations

Indications

- Temporary inlay and onlay treatments of the cavity
- Sealing of openings for implant screws
- Relining material for temporary crowns and bridges
- Block out material for retentive areas in the dental arch, e.g. before taking impressions
- Covering of the gingival margin
- Fixing of resin matrix during filling placement
- Temporary filling of cavities and sealing of root canal orifices

Advantages

- Easy to place – easy to remove in one piece
- No damage to preparation boundaries
- Durable and saliva-proof
- Non-sticky
- Time-saving through light-curing
- Elastic
- Flowable



REF 1282	Syringe 2 × 1.8 g, accessories
REF 2148	Application cannulae type 46, 100 pcs.

Clip

Light-curing filling material for temporary restorations

Indications

- Temporary fillings
- Temporary sealing of cavities, especially in inlay / onlay technique

Advantages

- Easy to place – easy to remove in one piece
- No damage to preparation boundaries
- Time-saving through light-curing
- Durable and saliva-proof
- Specifically useful in inlay / onlay technique



REF 1284	Syringe 2 × 4 g
REF 1285	Syringe 3 × 4 g
REF 1287	Caps 25 × 0.25 g
REF 9301	Dispenser – Caps

Clip F

Light-curing filling material with fluoride for temporary restorations

Indications

See Clip

Advantages

See Clip



REF 1289	Syringe 2 × 4 g
REF 1283	Syringe 3 × 4 g

CAD / CAM material

Luting

Core build-up

Temporaries

Denture relining

Impression

Repair

Ufi Gel® hard C · Ufi Gel® hard

Hard direct denture relining



Indications

Hard, permanent total or partial relinings to restore the functions of partial and total dentures

Lengthening of denture margins

Advantages

- Complete, hard relining chairside, in just one session
- Methyl methacrylate-free
- Neutral taste and odour
- No heat development in the mouth
- Good colour stability
- As easy as taking an impression
- Aesthetic, high patient acceptance and comfort
- Smooth surface
- New layers can be added at any time

SC
self-curing

auto mix

Ufi Gel® hard C	
REF 2215	Set cartridge 80 g, adhesive bottle 10 ml, accessories
REF 2218	Set + dispenser cartridge 80 g, adhesive bottle 10 ml, accessories
REF 2216	Cartridge 80 g, accessories
REF 2217	Adhesive bottle 10 ml
REF 2158	Dispenser – type 2
REF 2187	Mixing tips type 8, 50 pcs.
Ufi Gel® hard	
REF 2210	Set powder 60 g, liquid bottle 40 ml, conditioner bottle 20 ml, accessories

Clinical Case



CAD / CAM material

Luting

Core build-up

Temporaries

Denture relining

Impression

Repair

Ufi Gel® SC · Ufi Gel® P

Permanently soft, cold-curing relining material on silicone base



Indications

Permanently soft relining for total and partial dentures

- to eliminate pressure spots
- to dam the palatal vibrating line
- in cases of flabby ridges and / or insufficient adhesion
- to cushion sharp-edged alveolar processes
- to support the healing process in implantology

Advantages

- Top quality relining silicone
- Complete relining in one single session (chairside)
- Remains permanently soft
- Special adhesive for extreme bonding of silicone to denture
- Biocompatible (methacrylate-free)
- Neutral odour and taste
- Stable, aesthetic colour with chameleon effect
- Labside use: fewer steps than with other cold-cured materials
- For all PMMA based dentures
- Easy and fast application of direct and indirect relining
- Excellent adaptation to fine details for a precise fit of the denture
- Resistant against standard denture cleansers



SC
self-curing

auto mix

Ufi Gel® SC	
REF 2041	Set cartridge 50 ml, adhesive bottle 10 ml, glazing base 10 ml, glazing catalyst 10 ml, accessories
REF 2040	Cartridge 50 ml, accessories
REF 2029	Adhesive bottle 10 ml
REF 2047	Glazing bottle 2 × 10 ml (base / catalyst)
REF 2049	Polishing discs, 10 pcs.
REF 2158	Dispenser – type 2
REF 2187	Mixing tips type 8, 50 pcs.
Ufi Gel® P	
REF 2070	Set tube base 50 ml, catalyst 50 ml, glazing base 10 ml, glazing catalyst 10 ml, adhesive bottle 10 ml, accessories
REF 2071	Tube 2 × 50 ml (base / catalyst)
REF 2076	Adhesive bottle 10 ml
REF 2309	Disposable brushes for dental brush holder, 100 pcs.
REF 2315	Mixing palettes, 20 pcs.
REF 2338	Brush holder for VOCO disposable dental brushes and Micro Tim, 5 pcs.

Clinical Case



SEATING OF THE PROSTHESIS AND MOVEMENTS OF THE MANDIBLE



CAD / CAM material

Luting

Core build-up

Temporaries

Denture relining

Impression

Repair

V-Posil Putty Fast · Heavy Soft Fast · Mono Fast

Precision impression material, VPS

NEW

Now also as Putty in the large cartridge



Indications

V-Posil Putty Fast is used as preliminary material for

- two-step putty-wash impression technique
- one-step putty-wash impression technique
- two-step putty-wash impression technique using a foil (plastic putty spacer)
- one-step putty impression technique for forming functional peripheries

V-Posil Heavy Soft Fast is to be used as heavy bodied material for

- one-step impression technique (simultaneous technique) using dual viscosities
- two-step impression technique using dual viscosities
- functional impressions

V-Posil Mono Fast is to be used as a medium bodied tray or syringeable impression material for

- taking impressions over fixed / removable restorations and implants (i.e., transferring impression posts and bridge components)
- functional impressions
- fabricating crown and bridgework or inlays
- fabricating full or partial dentures
- relining impressions
- transferring root posts when fabricating posts and cores indirectly
- multi tray technique
- use in the simultaneous mixing technique as well as the putty-wash technique

Advantages

- Highly hydrophilic A-silicone for maximum precision
- High dimensional accuracy
- Long working time combined with a short intraoral setting time*
- High recovery after deformation
- Good hydrophilicity, even after setting, renders pouring and thus the prosthetic restoration perfect

* V-Posil Putty Fast 380 ml: Extraoral working time ≤ 01:30 min., time in mouth ≥ 02:30 min.

V-Posil Putty Fast

REF 2561	Jar 2 × 450 ml, accessories
REF 2562	Jar 8 × 450 ml, accessories
REF 2563	Cartridge 380 ml, accessories
REF 2564	Cartridge 2 × 380 ml
REF 2203	Mixing tips type 30, 50 pcs.

V-Posil Heavy Soft Fast

REF 2565	Cartridge 380 ml, accessories
REF 2566	Cartridge 2 × 380 ml
REF 2567	Cartridge 2 × 50 ml, accessories
REF 2568	Cartridge 10 × 50 ml
REF 2196	Mixing tips type 16, 50 pcs.
REF 2203	Mixing tips type 30, 50 pcs.

V-Posil Mono Fast

REF 2569	Cartridge 380 ml, accessories
REF 2570	Cartridge 2 × 380 ml
REF 2571	Cartridge 2 × 50 ml, accessories
REF 2572	Cartridge 10 × 50 ml
REF 2196	Mixing tips type 16, 50 pcs.
REF 2203	Mixing tips type 30, 50 pcs.
REF 2133	Intraoral tips type 6, 50 pcs.

V-Posil Adhesive

REF 2578	Bottle 10 ml
----------	--------------

V-Posil Light Fast · V-Posil X-Light Fast

Precision impression material, VPS

Indications

V-Posil Light Fast and V-Posil X-Light Fast are to be used as syringeable impression materials for

- two-step putty-wash impression technique
- one-step putty-wash impression technique
- two-step impression technique using a foil (plastic putty spacer)
- one-step impression technique (simultaneous technique) using dual viscosities
- relining impressions
- fabricating full or partial dentures

Advantages

- Highly hydrophilic A-silicone for maximum precision
- Long working time combined with a short intraoral setting time
- Exceptional toughness and recovery after deformation ensure safety during and after removal
- Good hydrophilicity, even after setting, renders pouring and thus the prosthetic restoration perfect

Clinical Case



Prepared teeth with retraction cord



Encasing the teeth in V-Posil Light Fast



Precise impression taking with V-Posil Putty Fast and V-Posil Light Fast



Finished denture on the model



Aesthetically natural result

Source: Dr. Walter Denner, Fulda / Germany



V-Posil Light Fast

- REF 2573 Cartridge 2 × 50 ml, accessories
- REF 2574 Cartridge 10 × 50 ml
- REF 2186 Mixing tips type 7, 50 pcs.
- REF 2141 Intraoral tips type 3, 50 pcs.

V-Posil X-Light Fast

- REF 2575 Cartridge 2 × 50 ml, accessories
- REF 2576 Cartridge 10 × 50 ml
- REF 2186 Mixing tips type 7, 50 pcs.
- REF 2141 Intraoral tips type 3, 50 pcs.

CAD / CAM material

Luting

Core build-up

Temporaries

Denture relining

Impression

Repair

Registrado® X-tra

Addition-curing silicone for bite registration, extra hard, fast setting



Indications

Occlusal bite registration
Fixing of face bow registrations
Location material for intraoral pin tracing templates

Advantages

- Optimised final hardness
- Allows application without time pressure
- Highly thixotropic qualities
- Good grinding properties
- Very precise impressions
- With economic mixing tips

Application



Excellent surface affinity



No resistance on occlusion



The bite registration can be easily trimmed with a scalpel



SC
self-curing

auto
mix

Shore-A
90

REF 2035	Cartridge 2 × 50 ml, accessories
REF 2036	Cartridge 8 × 50 ml, accessories
REF 2158	Dispenser – type 2
REF 2196	Mixing tips type 16, 50 pcs.
REF 2140	Intraoral tips type 2, 50 pcs.

Registrado® Clear

Transparent addition-curing silicone for bite registration, fast setting

Indications

Bite registration
Registration key for intraoral bearing device registration
Fixing of X-ray balls
Front and occlusal record
Silicone key for composite restorations

Advantages

- High final hardness combined with high transparency
- Convincing material consistency, ensures adherence to the row of teeth
- Work without time pressure thanks to temperature-controlled curing process (accelerated curing starts only when mouth closed)
- High dimensional and shape stability (> 99 %)
- Light-curing can be carried out perfectly through a layer of Registrado Clear



SC
self-curing

auto
mix

Shore-A
80

REF 2037	Cartridge 50 ml, accessories
REF 2158	Dispenser – type 2
REF 2196	Mixing tips type 16, 50 pcs.
REF 2140	Intraoral tips type 2, 50 pcs.

Not available in Canada

Individo® Lux

Preformed individual impression trays, light-curing



Indications

Fabrication of individual trays from contoured plates for maxillae and mandibles

Advantages

- In blue transparent or blue opaque colour
- Allows precise and economic processing
- Stable trays
- Pleasant mint flavour
- Non-sticky consistency
- Light-cured with standard halogen light or UVA lights

3-5 min
light-curing

REF 2402	Maxillae 50 pcs. blue opaque
REF 2403	Mandibles 50 pcs. blue opaque
REF 2408	Maxillae 50 pcs. blue transparent
REF 2409	Mandibles 50 pcs. blue transparent

Profibase

Preformed transparent pink impression trays / base plates, light-curing



Indications

Fabrication of gingiva shaded bases for wax models of complete and partial dentures

Fabrication of individual trays from contoured plates for maxillae and mandibles

Advantages

- Gingiva shade
- Simple and time-saving shaping by hand
- Permanent stability and compressive strength
- Pleasant mint flavour
- Non-sticky consistency
- Light-cured with standard halogen light or UVA lights

3-5 min
light-curing

REF 2111	Maxillae / mandibles 2 × 25 pcs.
REF 2112	Maxillae 50 pcs.
REF 2113	Mandibles 50 pcs.

CAD / CAM material

Luting

Core build-up

Temporaries

Denture relining

Impression

Repair

Fit Test® C & B

Addition-curing silicone material for checking of prosthetic reconstructions



auto
mix

Indications

Control of precision of fit, marginal adaptation and marginal gaps of

- full or partial crowns as well as bridges
- inlays / onlays
- cast post abutments / post crowns
- metal denture bases
- implant-supported crowns and bridges
- attachments and other secondary parts of dentures

Advantages

- Fast diagnostic help for all restorative pieces
- QuickMix syringe for simple handling
 - automatic bubble-free mixing
- Direct application
- Optimal colour for metal and ceramic restorations
- Fast results due to short working and setting time

REF 2095	QuickMix syringe 5 ml, accessories
REF 2261	Dispenser – QuickMix
REF 2188	Mixing tips type 9, 50 pcs.
REF 2191	Mixing tips type 11, only with intraoral tips type 1, 50 pcs.
REF 2139	Intraoral tips type 1, 50 pcs.

Cimara®

Material for ceramic repair with light-curing composite

ACID-FREE INTRAORAL
CERAMIC REPAIR



ceramic

metal

Indications

Intraoral repairs of defects in ceramic or composite veneer, fixed prosthetic work with metal frames

Advantages

- Only one session
- No removal or re-cementation of restorative pieces
- Simple working steps
- No additional devices required
- Permanent bond of composite to porcelain
- High shear bonding strength

REF 1196	Set coupling silane 8 × 0.3 ml, adhesive bottle 4 ml, Opaquer LC syringe 1.2 g, GrandioSO Caps 8 × 0.25 g (A1, 2 × A2, 2 × A3, A3.5, B2, GA3.25), accessories
REF 1197	Coupling silane 4 × 0.3 ml, accessories
REF 1198	Adhesive bottle 4 ml
REF 1575	Opaquer LC syringe 1.2 g, accessories
REF 1201	SiC Grinding Bur, 4 pcs.
REF 2147	Application cannulae type 45, 100 pcs.
REF 2309	Disposable brushes for dental brush holder, 100 pcs.
REF 2315	Mixing palettes, 20 pcs.
REF 2338	Brush holder for VOCO disposable dental brushes and Micro Tim, 5 pcs.



Devices · Various

Advancement. Efficacy. Practice-orientation.

The future of dentistry is digital. 3D printers play an ever-increasing role in the digital workflow of dental practices as well as laboratories. VOCO's SolFlex series comprises sophisticated equipment in different sizes, offering possibilities for new processing dimensions.

But also, nothing really functions in the practice without those practical little helpers – be it application cannulae in different sizes, large or small devices for application of or subsequent working with products, as well as cleaning preparations, devitalising pastes, moulds or material for blocking out.

SolFlex 350 · 650

Additive manufacturing for digital dentistry



Advantages

- DLP-Technology with a long-lasting UV-LED light source enables printing of clear transparent items such as splints
- Maximized building speed with high process reliability due to SMP technology
- Patented Flex-Vat technology – increasing printing speed while minimizing support structures, saving time and material
- Precise printing of high-viscosity materials / solid object with the PowerVat
- High vat volume allows production over night
- Processing of widely-used STL format

Technical Data SolFlex 350

Base area	400 × 400 mm
Build area	64 × 120 mm (3 exposure areas)
Max. build height	130 mm
Layer thickness	25 - 200 µm
Building capacity	up to 6 / 12** splints
Building speed	up to 138 mm/h, depending on layer thickness, material etc.
Pixel size	50 µm*
Precision	± 25 µm

Technical Data SolFlex 650

Base area	400 × 400 mm
Build area	128 × 120 mm (6 exposure areas)
Max. build height	130 mm
Layer thickness	25 - 200 µm
Building capacity	up to 12 / 24** splints
Building speed	up to 138 mm/h, depending on layer thickness, material etc.
Pixel size	50 µm*
Precision	± 25 µm

* Pixel Size and Print Volume may vary.

**Full arch splints. Printed on one or two levels with individual support.

SolFlex 350

REF 9102	3D printer
REF 9103	SMP – 3D printer (incl. Sensor Technology)
REF 9109	SMP Upgrade Kit
REF 9111	Flex-Vat – flexible material reservoir
REF 9115	Handle bar 350 / 650 – Handle bar Flex-Vat
REF 9121	Platform – Building platform

Accessories

REF 9106	Starter Package
REF 9107	Premium Starter Package
REF 9130	Otoflash G171 – Polymerisation unit with connection for inert gas
REF 9132	Otoflash G171 – Tray
REF 9133	Otoflash G171 – Polymerisation unit

SolFlex 650

REF 9104	3D printer
REF 9105	SMP – 3D printer (incl. Sensor Technology)
REF 9109	SMP Upgrade Kit
REF 9112	Flex-Vat – flexible material reservoir ¹
REF 9113	PowerVat 650 – material reservoir ²
REF 9115	Handle bar 350 / 650 – Handle bar Flex-Vat
REF 9122	Platform – Building platform

Accessories

See SolFlex 350

¹ for REF 9105

² for REF 9104

SolFlex 170

Additive manufacturing for digital dentistry



Advantages

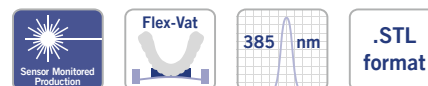
See SolFlex 350 · 650

Technical Data

Base area	296 × 318 mm
Build area	56 × 89 mm (1 exposure area)
Max. build height	120 mm
Layer thickness	25 - 200 µm
Building capacity	up to 3 / 6** splints
Building speed	up to 138 mm/h, depending on layer thickness material etc.
Pixel size	70 µm*
Precision	± 35 µm

* Pixel Size and Print Volume may vary.

**Full arch splints. Printed on one or two levels with individual support.



REF 9100	3D printer
REF 9101	SMP – 3D printer (incl. Sensor Technology)
REF 9108	SMP Upgrade Kit
REF 9110	Flex-Vat – flexible material reservoir
REF 9120	Platform – Building platform
REF 9119	Interchangeable plate for building platform
Accessories	
See SolFlex 350 · 650	

OtoFlash

Polymerisation unit for light-curing resin materials



Advantages

- Short curing times thanks to 2 flash bulbs on the underside
- Reliably curing due to intensive light output in a wavelength range of 280 - 580 nm
- The device can optionally be supplied with protective gas equipment

Technical Data

Dimensions of polymerisation chamber	120 × 120 × 50 mm
Rated voltage	100, 117, 230 volt AC, adjustable by switch
Power input	250 watt
Spectral distribution	280 - 700 nm, maximum between 400 and 500 nm
Flash frequency	10 flashes per second
Digital timer	adjustable from 1 to 9,999 flashes
Dimensions	310 × 310 × 140 mm
Weight	6 kg

REF 9133	Polymerisation unit
REF 9130	Polymerisation unit with connection for inert gas
REF 9132	Tray

VisCalor® Dispenser

Preheating dispenser for composite Caps

NEW

Ideal for use with
VisCalor bulk (p. 37)



REF 9143	VisCalor Dispenser – Preheating device
REF 9144	Changeable tops 2 pcs.
REF 9145	Protective foils 100 pcs.

Indications

Heating and application of highly filled composites in Caps

Advantages

- Effective handling – rapid heating and immediate application in one device
- Homogeneous heating thanks to near-infrared technology
- Two programs (VisCalor bulk and additional VOCO composites)
- Handy design and ideal shape for reaching molar cavities
- Better adaptation of composites to cavity walls thanks to silkier consistency



Caps Warmer

Preheating device for composite Caps

Indications

Device for warming composite Caps

Advantages

- Allows brief warming of composite Caps
- The specially designed tray optimally encloses VOCO composite Caps, which ensures that they are warmed uniformly
- Increasing flowability and adjusting the handling properties of the composite
- Simultaneous warming of one dispenser with Cap and up to four individual Caps – also ideal for working with several shades
- Choice of 3 temperature settings – depending on the clinical situation and the required consistency



REF 9001 Preheating device

VOCO Dynamic Dispenser

Dynamic mixing device

Indications

Device for the automatic dispensing and mixing of VOCO impression materials in the 5:1 cartridge

Advantages

- Homogeneous, dynamic mixing of product components to ensure a consistently high material quality
- Bubble-free dispensing
- Fill level display
- 2 feed speeds
- Electronic residue detection



REF 9140 Mixing device 230 V
Not available in Canada

Celalux® 3

High-Power LED curing-light



REF 9090 Celalux 3 (handpiece, battery charger, power cord with interchangeable mains adapters, 2 Device Bases, 8 mm light guide, rubber shield, operating instructions)

Accessories

REF 9091 Light guide 8 mm, autoclavable
 REF 9092 Device Base
 REF 9093 Rubber shield, 5 pcs.

Indications

Curing of all light-curing dental materials whose polymerisation is activated within a wavelength range of 450 - 480 nm

Advantages

- State-of-the-art LED technology with high light intensity (approx. 1,300 mW / cm²)
- Wavelength range 450 - 480 nm
- Slim and ergonomic design (pen-shaped); weight of the handpiece, including device base and light guide, weighs only 70 g
- Indicates how much time has elapsed by vibrating at the start, and again after 10 s and 20 s, instead of the acoustic signals previously used
- Easy to handle, cordless
- Autoclavable 8 mm light guide
- The spare device base supplied ensures the device is always ready for use
- Battery is very easy to change

GIC Mixer

Capsule mixing device



REF 9050 Capsule mixing device

Indications

Device for mixing powder and liquid in application capsules

Advantages

- High oscillating frequency of 4,600 rpm, creating a particularly homogeneous mixture of powder and liquid
- Modern design
- Capsule holder allows simple insertion and removal of capsules
- User-friendly
- Quiet and practically vibration-free
- Mixing times can be freely selected between 1 and 99 seconds

Caries Marker

Coloured solution for disclosing caries infections



Indications

Dyeing of carious dentine to simplify cavity preparation and for demonstration purposes

Advantages

- Precise distinction between carious and healthy dentine
- Supports minimally invasive restoration techniques
- Suited for training and teaching purposes on extracted teeth

REF 1005 Bottle 2 × 3 ml, accessories
 REF 2252 Pele Tim, No. 1, 3.000 × ø 4 mm
Not available in Canada

3D printer

Devices

Others

Cleaning

Pele Tim

Foam pellets for application of liquid or paste preparations without pressure



Indications

Touching of infected alveoli
 Endodrain
 Vitality test
 Removal of material excess from cementation or sealing
 Simple application, e.g. of fluoride preparations

Advantages

- 5 practical sizes
- Painfree application without pressure
- Economical application
- Hygienic application without fluff

REF 2250 No. 0 3.000 × ø 3 mm
 REF 2252 No. 1 3.000 × ø 4 mm
 REF 2253 No. 2 1.000 × ø 5 mm
 REF 2254 No. 3 500 × ø 8 mm
 REF 2255 No. 4 500 × 6 × 8 mm

Small devices

Disposable articles

Block Out Gel LC

Light-curing block out material



Indications

Blocking out of plaster models

Advantages

- Blue colour for simple application control
- Easy application directly from the syringe

10-30
sec
light-curing

REF 1661 Syringe 4 × 1.2 ml, accessories
REF 2144 Application cannulae type 44,
100 pcs.

Not available in Canada

Dimanto®

One step diamond polisher for pre- and high-gloss polishing of composites



Indications

Pre-polishing and high gloss polishing of finished composite restorations

Advantages

- Excellent polishing results
- Suitable for all composites – also for those of the latest generation
- Diamond-interspersed for efficient polishing
- Minimised outlay for instruments; pre-polishing and high gloss polishing with only one polisher
- Autoclavable and thus reusable
- Available in five different shapes for precise and individual polishing
- Can be used with or without water cooling

for
NHT
Composites

REF 2380 Set 5 pcs. mixed (one each of small point, large point, small cup, large cup, lens)
REF 2381 Small point, 10 pcs.
REF 2382 Large point, 10 pcs.
REF 2383 Small cup, 10 pcs.
REF 2384 Large cup, 10 pcs.
REF 2385 Lens, 10 pcs.



Traypurol® tabs

Active-tabs for cleaning impression trays and instruments

Indications

Self-acting cleaning of impression trays and instruments

Advantages

- Removes alginates and cements within a short amount of time
- Especially easy to dose
- No vigorous stirring necessary – the tabs automatically dissolve when placed in water
- Gentle to material – suitable for all rustproof metals (including aluminium) and plastics
- Bio-degradable and pH-neutral
- Can be used in ultrasonic baths



REF 2355 50 pcs.

Traypurol®

Concentrated cleaning agent for impression trays and instruments

Indications

Self-acting cleaning of impression trays and instruments

Advantages

- Simply diluted in water
- Removes residues of alginates, zinc oxide eugenol, glass ionomer, carboxylate and phosphate cements
- Cleans trays and instruments reliably overnight
- Can be used in ultrasonic devices
- Suited also for non-oxidising metals and plastic
- Biodegradable and gentle



REF 2289 Bottle 1 l
 REF 2290 Canister 5 l
 REF 2304 Dispenser pump – canister 5 l
Not available in Canada

Caps Dispenser

Direct application dispenser for dispensing restorative materials in Caps



REF 9301 Dispenser – Caps

Dispenser type 2

Dispenser to extrude dental materials from cartridges



For 1:1 or 1:2 cartridges (50 ml)

REF 2158 Dispenser – type 2

Dispenser type 3

Dispenser to extrude dental materials from cartridges



For 1:1 or 1:2 cartridges (25 ml)

REF 2259 Dispenser – type 3

QuickMix Dispenser

Dispenser to extrude dental materials from QuickMix syringes



For 1:1 QuickMix syringes

REF 2261 Dispenser – QuickMix

AC Applicator type 1

Forceps-type applicator to directly apply the content of VOCO application capsules (AC) into the cavity



REF 2331 Applicator – AC type 1

AC Applicator type 2

Forceps-type applicator to directly apply the content of VOCO application capsules (AC) into the cavity



REF 2334 Applicator – AC type 2

AC Activator

Device to activate VOCO application capsules (AC)




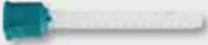

REF 9300 Activator – AC


Application brush dispenser

Dispenser for hygienic removal of application brushes – can be repeatedly refilled with two types of brushes



REF 2244 Dispenser – application brushes

Mixing tips					
REF 2185	Mixing tips type 6 for Structur Premium, Structur 2 in cartridge, Structur 3 in cartridge, 50 pcs.		REF 2194	Mixing tips type 14 for Bifix SE, Perfect Bleach Office+, 50 pcs.	
REF 2186	Mixing tips type 7 for V-Posil Light Fast, V-Posil X-Light Fast, 50 pcs.		REF 2195	Mixing tips type 15 (with intraoral tips type 1) for Bifix SE, Perfect Bleach Office+, 50 pcs.	
REF 2187	Mixing tips type 8 for Ufi Gel hard C, Ufi Gel SC, 50 pcs.		REF 2196	Mixing tips type 16 (for intraoral tips type 2) for Registrado Clear, Registrado X-tra, V-Posil Heavy Soft Fast in cartridge, V-Posil Mono Fast in cartridge, 50 pcs.	
REF 2188	Mixing tips type 9 for Bifix Temp, Fit Test C & B, 50 pcs.		REF 2199	Mixing tips type 19 for Rebuilda DC in cartridge, bendable, 30 pcs.	
REF 2189	Mixing tips type 10 for Meron Plus QM, Provicol QM, Provicol QM Plus, Quick Up, Structur 2 in the QuickMix syringe, Structur 3 in the QuickMix syringe, 50 pcs.		REF 2202	Mixing tips type 20 for die silicone, 50 pcs.	
REF 2191	Mixing tips type 11 for Bifix QM, Fit Test C & B only with intraoral tips type 1, Grandio Core Dual Cure in the QuickMix syringe, Rebuilda DC in the QuickMix syringe, 50 pcs.		REF 2203	Mixing tips type 30 for V-Posil Heavy Soft Fast in large cartridge, V-Posil Mono Fast in large cartridge, V-Posil Putty Fast in large cartridge, 50 pcs.	
REF 2192	Mixing tips type 12 for Rebuilda DC in cartridge, 50 pcs.				

Application aids					
REF 2169	VOCO Trifill instrument, 10 pcs.		REF 2247	Single Tim, application brushes, 100 pcs.	
REF 2249	Micro Tim, fine application brushes, 100 pcs.		REF 2246	Endo Tim, application brushes, to be used in the root canal, 50 pcs.	
REF 2309	Disposable brushes for dental brush holder, 100 pcs.		REF 2245	Easy Brush, application brushes, 50 pcs.	
REF 2338	Brush holder for VOCO disposable dental brushes and Micro Tim, 5 pcs.				

3D printer

Devices

Others

Cleaning

Small devices

Disposable articles

3D printer










Devices






Others

Cleaning

Small devices

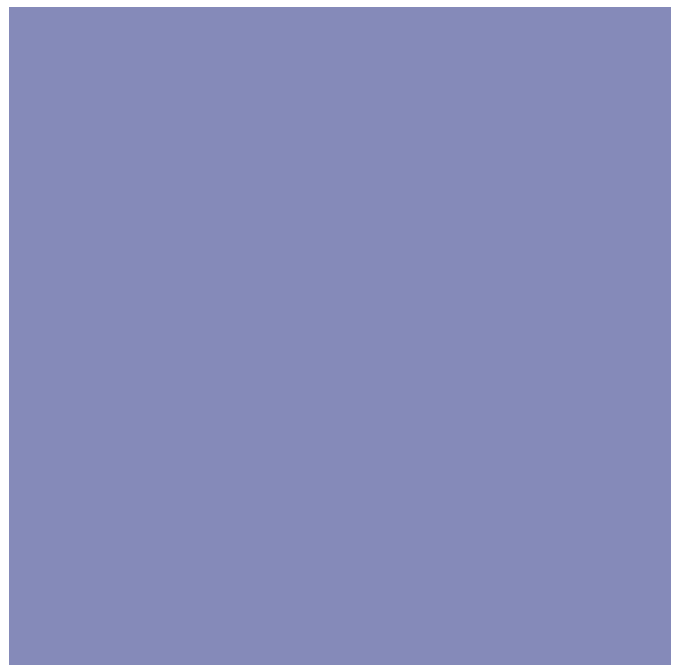
Disposable articles

Application cannulae					
REF 2145	Application cannulae type 40 for Fissurit F / FX, 100 pcs.		REF 2147	Application cannulae type 45 for Amaris Gingiva, Cimara Opaquer LC, FinalTouch, Grandio Seal, 100 pcs.	
REF 2146	Application cannulae type 41 for Admira Fusion Flow, Calcimol LC, Grandio / SO Flow, Ionoseal, LC Dam, 100 pcs.		REF 2148	Application cannulae type 46 for Admira Fusion x-base, Clip Flow, GrandioSO Heavy Flow, x-tra base, 100 pcs.	
REF 2310	Application cannulae type 42 for Vococid, 30 pcs.		REF 2131	Application cannulae type 47 for Calcicur, 30 pcs.	
REF 2167	Application cannulae type 43 for VOCO Profluorid Varnish cartridge, 100 pcs.		REF 2132	Application cannulae type 48 for Vococid, 50 pcs.	
REF 2144	Application cannulae type 44 for Admira Flow, Amaris Flow, Arabesk Flow, Block Out Gel LC, Quick Up LC, Twinky Star Flow, 100 pcs.				

Intraoral tips					
REF 2133	Intraoral tips type 6 for V-Posil Mono Fast, 50 pcs.		REF 2141	Intraoral tips type 3 for Rebuilda DC in cartridge, V-Posil Light Fast, V-Posil X-Light Fast, 50 pcs.	
REF 2139	Intraoral tips type 1 for Bifix QM, Bifix SE, Perfect Bleach Office+, to be used in the root canal with Rebuilda DC in the QuickMix syringe, 50 pcs.		REF 2142	Intraoral tips type 4 for Bifix QM, Grandio Core Dual Cure in the QuickMix syringe, Rebuilda DC in the QuickMix syringe, 50 pcs.	
REF 2140	Intraoral tips type 2 for Registrado Clear, Registrado X-tra, 50 pcs.				

Mixing spatulas · Mixing pads · Mixing palettes					
REF 2303	Mixing pads 70 × 80 mm, with adhesive back, 4 pcs.		REF 2168	VOCO mixing spatula for cements, 20 pcs.	
REF 2315	Mixing palettes, 20 pcs.				

A	AC Activator	82	F	Futurabond DC	22	R	Rebilda DC	59
	AC Applicator	82		Futurabond M	21		Rebilda Post	57
	Admira Bond	28		Futurabond M+	21		Rebilda Post GT	58
	Admira Fusion	25		Futurabond NR	23		Registrado Clear	70
	Admira Fusion Flow	26		Futurabond U	20		Registrado X-tra	70
	Admira Fusion x-base	28	G	GIC Mixer	78	Remin Pro	11	
	Admira Fusion x-tra	27		Grandio	33	S	SolFlex 170	75
	Admira Protect	13		Grandio blocs	48		SolFlex 350	74
	Alfacomp LC	40		Grandio Core Dual Cure	60		SolFlex 650	74
	Amaris	35		Grandio disc	48		Solobond M	23
	Amaris Flow	35		Grandio Flow	34		Structur 2	62
	Amaris Gingiva	36		Grandio Seal	8	Structur 3	61	
	Application brush dispenser	82		GrandioSO	29	Structur Premium	63	
	Aqua Meron	54		GrandioSO Flow	30	T	Temporary Set	62
	Arabesk	40		GrandioSO Heavy Flow	31		Traypurol	81
	Arabesk Flow	40		GrandioSO x-tra	32		Traypurol tabs	81
	B	Bifix QM	52	GrandTEC	32		Twinky Star	41
Bifix SE		51	I	Individo Lux	71		Twinky Star Flow	41
Bifix Temp		63		Ionofil Molar	45	U	Ufi Gel hard	66
Bifluorid 5		10		Ionofil Molar AC Quick	45		Ufi Gel hard C	66
Bifluorid 10		10		Ionolux	43		Ufi Gel P	67
Block Out Gel LC	80	Ionoseal		19	Ufi Gel SC		67	
BrackFix	56	Ionostar Molar	44	V	VisCalor bulk		37	
C	Calcicur	18	Ionostar Plus		44	VisCalor Dispenser	76	
	Calcimol LC	18	M		Meron	54	V-Posil Heavy Soft Fast	68
	Caps Dispenser	82			Meron (Application capsule)	54	V-Posil Light Fast	69
	Caps Warmer	77			Meron Plus	53	V-Posil Mono Fast	68
	Caries Marker	79			Meron Plus QM	53	V-Posil Putty Fast	68
	Celalux 3	78			O	OtoFlash	75	V-Posil X-Light Fast
	Ceramic Bond	52	Pele Tim			79	V-Print model	49
	Cimara	72	Perfect Bleach			14	V-Print SG	49
	CleanJoy	7	Perfect Bleach Office+			15	Vococid	22
	Clip	65	Polofil Supra			41	VOCO Dynamic Dispenser	77
Clip F	65	Profibase	71		VOCO Ionofil Molar	45		
Clip Flow	65	Profluorid Varnish	12		VOCO Ionofil Molar AC			
D	Dimanto	80	Prophylaxis Set		16	Quick	45	
	Dispenser	82	Provicol		64	VOCO Profluorid Varnish	12	
	Disposable articles	83	Provicol QM		64	X	x-tra base	38
	Dynamic Dispenser	77	Provicol QM Plus		64		x-tra fil	39
E	Easy Glaze	46	P	Q	Quick Up		55	
	F	FinalTouch			36		QuickMix Dispenser	82
Fissurit F		9						
Fissurit FX		9						
Fit Test C & B		72						



VOCO GmbH
Anton-Flettner-Straße 1-3
27472 Cuxhaven
Germany

Freecall: 00 800 44 444 555
Fax: +49 (0)4721-719-140

info@voco.com
www.voco.dental